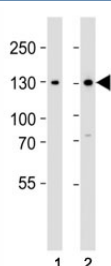


## GLI2 Antibody (F52545)

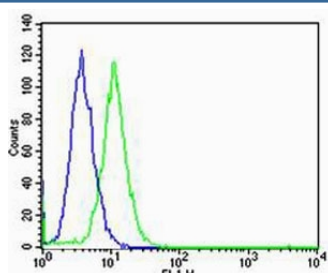
Catalog No.	Formulation	Size
F52545-0.4ML	In 1X PBS, pH 7.4, with 0.09% sodium azide	0.4 ml
F52545-0.08ML	In 1X PBS, pH 7.4, with 0.09% sodium azide	0.08 ml

**Bulk quote request**

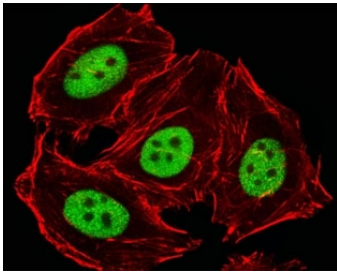
<b>Availability</b>	1-3 business days
<b>Species Reactivity</b>	Human
<b>Format</b>	Antigen affinity purified
<b>Clonality</b>	Polyclonal (rabbit origin)
<b>Isotype</b>	Rabbit Ig
<b>Purity</b>	Antigen affinity
<b>UniProt</b>	P10070
<b>Applications</b>	Immunofluorescence : 1:25 Flow Cytometry : 1:25 Western Blot : 1:1000
<b>Limitations</b>	This GLI2 antibody is available for research use only.



Western blot analysis of lysate from (1) 293 and (2) Jurkat cell line using GLI2 antibody at 1:1000. Predicted molecular weight: 86~168 kDa (multiple isoforms)(1).



Flow cytometric analysis of HeLa cells using GLI2 antibody (green) compared to an [isotype control of rabbit IgG](#) (blue). Ab diluted at 1:25 dilution. An Alexa Fluor 488 goat anti-rabbit IgG was used as the secondary Ab.



Fluorescent image of HeLa cells stained with GLI2 antibody diluted at 1:25 dilution. An Alexa Fluor 488-conjugated goat anti-rabbit IgG was used as the secondary Ab (green). Cytoplasmic actin was counterstained with Alexa Fluor 555 conjugated with Phalloidin (red).

## Description

Acts as a transcriptional activator. May play a role during embryogenesis. Binds to the DNA sequence 5'-GAACCACCCA-3' which is part of the TRE-2S regulatory element that augments the Tax-dependent enhancer of human T-cell leukemia virus type 1. Is involved in the smoothened (SHH) signaling pathway.

## Application Notes

Titration of the GLI2 antibody may be required due to differences in protocols and secondary/substrate sensitivity.

1. GLI-2 exists as five alternatively spliced isoforms of 133 kDa (isoform 1), 132 (2), 88 (3), 86 (4) and 168 kDa (isoform 5).

## Immunogen

This GLI2 antibody was produced from a rabbit immunized with a KLH conjugated synthetic peptide between 1287-1321 amino acids from the C-terminal region of human GLI2.

## Storage

Aliquot the GLI2 antibody and store frozen at -20oC or colder. Avoid repeated freeze-thaw cycles.