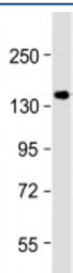


GIGYF2 Antibody (F53922)

Catalog No.	Formulation	Size
F53922-0.2ML	In 1X PBS, pH 7.4, with 0.09% sodium azide	0.2 ml
F53922-0.05ML	In 1X PBS, pH 7.4, with 0.09% sodium azide	0.05 ml

[Bulk quote request](#)

Availability	1-3 business days
Species Reactivity	Human
Predicted Reactivity	Mouse
Format	Antigen affinity purified
Clonality	Polyclonal (rabbit origin)
Isotype	Rabbit Ig
Purity	Antigen affinity
UniProt	Q6Y7W6
Applications	Western Blot : 1:500-1000
Limitations	This GIGYF2 antibody is available for research use only.



Western blot testing of human MCF-7 cell lysate with GIGYF2 antibody at 1:1000.
Expected molecular weight: 150-180 kDa.

Description

GRB10-interacting GYF protein 2 may act cooperatively with GRB10 to regulate tyrosine kinase receptor signaling, including IGF1 and insulin receptors.

Application Notes

Titration of the GIGYF2 antibody may be required due to differences in protocols and secondary/substrate sensitivity.

Immunogen

A portion of amino acids 835-869 from the human protein was used as the immunogen for the GIGYF2 antibody.

Storage

Aliquot the GIGYF2 antibody and store frozen at -20°C or colder. Avoid repeated freeze-thaw cycles.