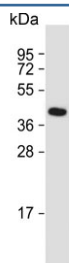


GFRAL Antibody (F54320)

Catalog No.	Formulation	Size
F54320-0.2ML	In 1X PBS, pH 7.4, with 0.09% sodium azide	0.2 ml
F54320-0.05ML	In 1X PBS, pH 7.4, with 0.09% sodium azide	0.05 ml

[Bulk quote request](#)

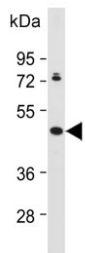
Availability	1-3 business days
Species Reactivity	Human
Format	Purified
Host	Rabbit
Clonality	Polyclonal (rabbit origin)
Isotype	Rabbit IgG
Purity	Antigen affinity purified
UniProt	Q6UXV0
Applications	Western Blot : 1:500-1:2000 Immunohistochemistry (FFPE) : 1:25 Flow Cytometry : 1:25 (1x10e6 cells)
Limitations	This GFRAL antibody is available for research use only.



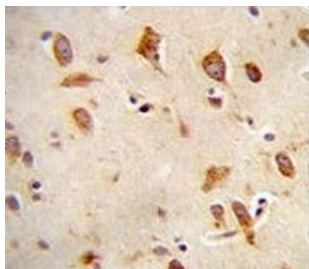
Western blot testing of human brain lysate with GFRAL antibody. Predicted molecular weight ~45 kDa.



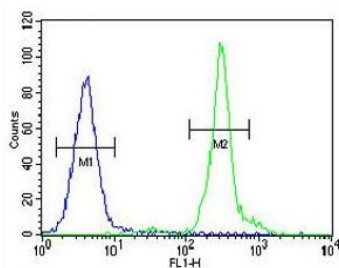
Western blot testing of human MDA-MB-435 cell lysate with GFRAL antibody. Predicted molecular weight ~45 kDa.



Western blot testing of human MDA-MB-453 cell lysate with GFRAL antibody. Predicted molecular weight ~45 kDa.



IHC testing of FFPE human brain tissue with GFRAL antibody. HIER: steam section in pH6 citrate buffer for 20 min and allow to cool prior to staining.



Flow cytometry testing human MDA-MB-435 cells with GFRAL antibody; Blue=isotype control, Green= GFRAL antibody.

Description

Brainstem-restricted receptor for GDF15 which regulates food intake, energy expenditure and body weight in response to metabolic and toxin-induced stresses. Upon interaction with its ligand, GDF15, interacts with RET and induces cellular signaling through activation of MAPK- and AKT- signaling pathways. [UniProt]

Application Notes

The stated application concentrations are suggested starting points. Titration of the GFRAL antibody may be required due to differences in protocols and secondary/substrate sensitivity.

Immunogen

A portion of amino acids 366-394 from the human protein was used as the immunogen for the GFRAL antibody.

Storage

Aliquot the GFRAL antibody and store frozen at -20oC or colder. Avoid repeated freeze-thaw cycles.

