

## GFRA1 Antibody (R31615)

Catalog No.	Formulation	Size
R31615	0.5mg/ml if reconstituted with 0.2ml sterile DI water	100 ug

**Bulk quote request**

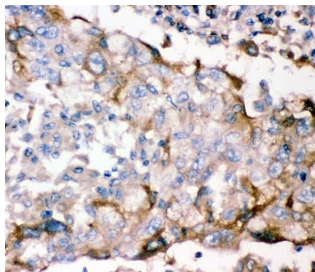
<b>Availability</b>	1-3 business days
<b>Species Reactivity</b>	Human
<b>Format</b>	Antigen affinity purified
<b>Host</b>	Rabbit
<b>Clonality</b>	Polyclonal (rabbit origin)
<b>Isotype</b>	Rabbit IgG
<b>Purity</b>	Antigen affinity
<b>Buffer</b>	Lyophilized from 1X PBS with 2.5% BSA and 0.025% sodium azide
<b>Gene ID</b>	14585
<b>Applications</b>	Western Blot : 0.5-1ug/ml IHC (FFPE) : 0.5-1ug/ml
<b>Limitations</b>	This GFRA1 antibody is available for research use only.

kDa  
200 -  
116 -  
97 -  
66 -  
44 -  
31 -  
22 -  
14 -  
6 -

Western blot testing of GFRA1 antibody and human placenta lysate. Predicted/observed size ~50KD

kDa  
200 -  
116 -  
97 -  
66 -  
44 -  
31 -  
22 -  
14 -  
6 -

Western blot testing of GFRA1 antibody and recombinant human protein (0.5ng)



IHC-P: GFRA1 antibody testing of human lung cancer tissue

## Description

GNDF family receptor alpha-1, also known as the GDNF receptor, is a protein that in humans is encoded by the GFRA1 gene. It is mapped to chromosome 10q25.3. The protein encoded by this gene is a member of the GDNF receptor family. GFRA1 is released by neuronal cells, Schwann cells, and injured sciatic nerve. It is a glycosylphosphatidylinositol(GPI)-linked cell surface receptor for both GDNF and NTN, and mediates activation of the RET tyrosine kinase receptor. This gene is also a candidate gene for Hirschsprung disease. Soluble GFRA1 mediates robust recruitment of RET to lipid rafts via a mechanism requiring the RET tyrosine kinase.

## Application Notes

The stated application concentrations are suggested starting amounts. Titration of the GFRA1 antibody may be required due to differences in protocols and secondary/substrate sensitivity.

## Immunogen

Human partial recombinant protein (AA 25-227) was used as the immunogen for this GFRA1 antibody.

## Storage

After reconstitution, the GFRA1 antibody can be stored for up to one month at 4oC. For long-term, aliquot and store at -20oC. Avoid repeated freezing and thawing.