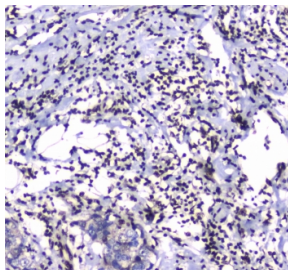


GFI1 Antibody (RQ4261)

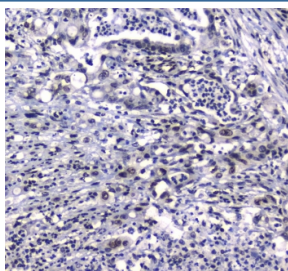
Catalog No.	Formulation	Size
RQ4261	0.5mg/ml if reconstituted with 0.2ml sterile DI water	100 ug

Bulk quote request

Availability	1-3 business days
Species Reactivity	Human
Format	Antigen affinity purified
Host	Rabbit
Clonality	Polyclonal (rabbit origin)
Isotype	Rabbit IgG
Purity	Antigen affinity purified
Buffer	Lyophilized from 1X PBS with 2% Trehalose and 0.025% sodium azide
UniProt	Q99684
Localization	Nucleus
Applications	IHC (FFPE) : 1-2ug/ml
Limitations	This GFI1 antibody is available for research use only.



IHC testing of FFPE human breast cancer tissue with GFI1 antibody at 1ug/ml. Required HIER: steam section in pH6 citrate buffer for 20 min and allow to cool prior to staining.



IHC testing of FFPE human rectal cancer tissue with GFI1 antibody at 1ug/ml. Required HIER: steam section in pH6 citrate buffer for 20 min and allow to cool prior to staining.

Description

Zinc finger protein Gfi-1 is a protein that in humans is encoded by the GF11 gene. This gene encodes a nuclear zinc finger protein that functions as a transcriptional repressor. This protein plays a role in diverse developmental contexts, including hematopoiesis and oncogenesis. It functions as part of a complex along with other cofactors to control histone modifications that lead to silencing of the target gene promoters. Mutations in this gene cause autosomal dominant severe congenital neutropenia, and also dominant nonimmune chronic idiopathic neutropenia of adults, which are heterogeneous hematopoietic disorders that cause predispositions to leukemias and infections. Multiple alternatively spliced variants, encoding the same protein, have been identified for this gene.

Application Notes

Optimal dilution of the GF11 antibody should be determined by the researcher.

Immunogen

Amino acids NLITHSRKHTGFKPFGCDLCGKGFQRKVDLRRHRETQH were used as the immunogen for the GF11 antibody.

Storage

After reconstitution, the GF11 antibody can be stored for up to one month at 4oC. For long-term, aliquot and store at -20oC. Avoid repeated freezing and thawing.