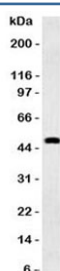


## GFAP Antibody [clone GFA12-3] (V7009)

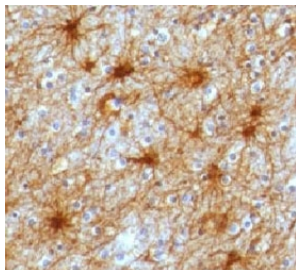
Catalog No.	Formulation	Size
V7009-100UG	0.2 mg/ml in 1X PBS with 0.1 mg/ml BSA (US sourced) and 0.05% sodium azide	100 ug
V7009-20UG	0.2 mg/ml in 1X PBS with 0.1 mg/ml BSA (US sourced) and 0.05% sodium azide	20 ug
V7009SAF-100UG	1 mg/ml in 1X PBS; BSA free, sodium azide free	100 ug
V7009IHC-7ML	Prediluted in 1X PBS with 0.1 mg/ml BSA (US sourced) and 0.05% sodium azide; *For IHC use only*	7 ml

[Bulk quote request](#)

<b>Species Reactivity</b>	Human
<b>Format</b>	Purified
<b>Host</b>	Mouse
<b>Clonality</b>	Monoclonal (mouse origin)
<b>Isotype</b>	Mouse IgG1, kappa
<b>Clone Name</b>	GFA12-3
<b>Purity</b>	Protein G affinity chromatography
<b>Gene ID</b>	2670
<b>Localization</b>	Cytoplasmic
<b>Applications</b>	Western Blot : 1-2ug/ml Immunohistochemistry (FFPE) : 1-2ug/ml for 30 min at RT Prediluted IHC Only Format : incubate for 30 min at RT (1)
<b>Limitations</b>	This GFAP antibody is available for research use only.



Western blot testing of human brain and GFAP antibody (clone GFA12-3). Predicted molecular weight ~50 kDa.



IHC testing of FFPE human brain and GFAP antibody (clone GFA12-3). FFPE testing requires sections to be boiled in pH 9 10mM Tris with 1mM EDTA for 10-20 minutes, followed by cooling at RT for 20 minutes, prior to staining.

## Description

Glial fibrillary acidic protein is one of the major intermediate filament proteins of mature astrocytes. It is used as a marker to distinguish astrocytes from other glial cells during development. Mutations in this gene cause Alexander disease, a rare disorder of astrocytes in the central nervous system. Alternative splicing results in multiple transcript variants encoding distinct isoforms. [RefSeq]

## Application Notes

Titration of the GFAP antibody may be required for optimal performance.

1. The prediluted format is supplied in a dropper bottle and is optimized for use in IHC. After epitope retrieval step (if required), drip mAb solution onto the tissue section and incubate at RT for 30 min.

## Immunogen

Native Glial fibrillary acidic protein was used as the immunogen for this GFAP antibody.

## Storage

Store the GFAP antibody at 2-8°C.