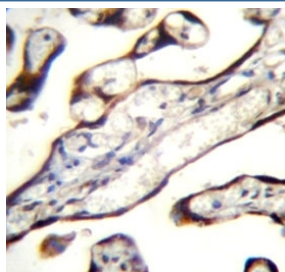


## GDF15 Antibody (F42280)

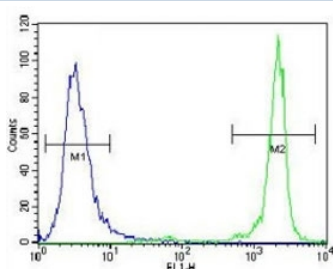
Catalog No.	Formulation	Size
F42280-0.4ML	In 1X PBS, pH 7.4, with 0.09% sodium azide	0.4 ml
F42280-0.08ML	In 1X PBS, pH 7.4, with 0.09% sodium azide	0.08 ml

**Bulk quote request**

<b>Availability</b>	1-3 business days
<b>Species Reactivity</b>	Human
<b>Format</b>	Antigen affinity purified
<b>Host</b>	Rabbit
<b>Clonality</b>	Polyclonal (rabbit origin)
<b>Isotype</b>	Rabbit Ig
<b>Purity</b>	Antigen affinity
<b>UniProt</b>	Q99988
<b>Applications</b>	Western Blot : 1:1000 IHC (Paraffin) : 1:10-1:50 Flow Cytometry : 1:10-1:50
<b>Limitations</b>	This GDF15 antibody is available for research use only.



GDF15 antibody immunohistochemistry analysis in formalin fixed and paraffin embedded human placenta tissue.



GDF15 antibody flow cytometric analysis of NCI-H460 cells (green) compared to a [negative control](#) (blue). FITC-conjugated goat-anti-rabbit secondary Ab was used for the analysis.



GDF15 antibody western blot analysis in NCI-H460 lysate. Predicted molecular weight ~34 kDa (pro-form) and ~25 kDa (mature form).

## Description

Bone morphogenetic proteins are members of the transforming growth factor-beta superfamily and regulate tissue differentiation and maintenance. They are synthesized as precursor molecules that are processed at a dibasic cleavage site to release C-terminal domains containing a characteristic motif of 7 conserved cysteines in the mature protein.

## Application Notes

Titration of the GDF15 antibody may be required due to differences in protocols and secondary/substrate sensitivity.

## Immunogen

A portion of amino acids 51-79 from the human protein was used as the immunogen for this GDF15 antibody.

## Storage

Aliquot the GDF15 antibody and store frozen at -20oC or colder. Avoid repeated freeze-thaw cycles.