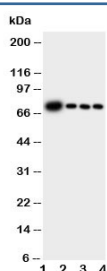


GCLC Antibody (R30565)

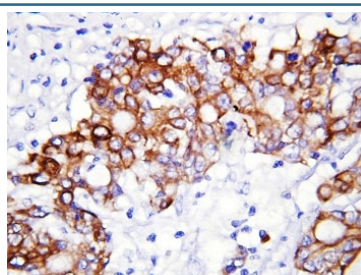
Catalog No.	Formulation	Size
R30565	0.5mg/ml if reconstituted with 0.2ml sterile DI water	100 ug

Bulk quote request

Availability	1-3 business days
Species Reactivity	Human, Mouse, Rat
Format	Antigen affinity purified
Host	Rabbit
Clonality	Polyclonal (rabbit origin)
Isotype	Rabbit IgG
Purity	Antigen affinity
Buffer	Lyophilized from 1X PBS with 2.5% BSA and 0.025% sodium azide/thimerosal
UniProt	P48506
Applications	Western Blot : 0.5-1ug/ml IHC (FFPE) : 0.5-1ug/ml
Limitations	This GCLC antibody is available for research use only.



Western blot testing of GCLC antibody and Lane 1: rat brain; 2: rat kidney; 3: rat heart; 4: rat lung tissue lysate



IHC-P: GCLC antibody testing of human rectal cancer tissue

Description

Glutamate--cysteine ligase catalytic subunit, is an enzyme that in humans is encoded by the GCLC gene. Glutamate-cysteine ligase, also known as gamma-glutamylcysteine synthetase is the first rate limiting enzyme of glutathione synthesis. The enzyme consists of two subunits, a heavy catalytic subunit and a light regulatory subunit. The gene encoding the catalytic subunit encodes a protein of 367 amino acids with a calculated molecular weight of 72.773 kDa and maps to chromosome 6p12.1. Deficiency of gamma-glutamylcysteine synthetase in human is associated with enzymopathic hemolytic anemia.

Application Notes

The stated application concentrations are suggested starting amounts. Titration of the GCLC antibody may be required due to differences in protocols and secondary/substrate sensitivity.

Immunogen

An amino acid sequence from the N-terminus of human GCLC (GSPLSWEETKRHADHVRR) was used as the immunogen for this GCLC antibody.

Storage

After reconstitution, the GCLC antibody can be stored for up to one month at 4oC. For long-term, aliquot and store at -20oC. Avoid repeated freezing and thawing.