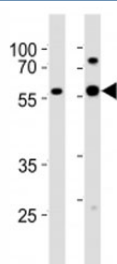


GATA6 Antibody (F52929)

Catalog No.	Formulation	Size
F52929-0.4ML	In 1X PBS, pH 7.4, with 0.09% sodium azide	0.4 ml
F52929-0.08ML	In 1X PBS, pH 7.4, with 0.09% sodium azide	0.08 ml

[Bulk quote request](#)

Availability	1-3 business days
Species Reactivity	Human
Format	Antigen affinity purified
Clonality	Polyclonal (rabbit origin)
Isotype	Rabbit Ig
Purity	Antigen affinity
UniProt	Q92908
Applications	Western Blot : 1:1000
Limitations	This GATA6 antibody is available for research use only.



Western blot analysis of lysate from 1) HeLa and 2) MCF-7 cell line using GATA6 antibody at 1:1000. Predicted molecular weight: 60, 45 kDa (isoforms 1, 2).

Description

Transcriptional activator that regulates SEMA3C and PLXNA2. Thought to be important for regulating terminal differentiation and/or proliferation.

Application Notes

Titration of the GATA6 antibody may be required due to differences in protocols and secondary/substrate sensitivity.

Immunogen

This GATA6 antibody was produced from a rabbit immunized with a KLH conjugated synthetic peptide between 551-585

amino acids from the C-terminal region of human GATA6.

Storage

Aliquot the GATA6 antibody and store frozen at -20oC or colder. Avoid repeated freeze-thaw cycles.