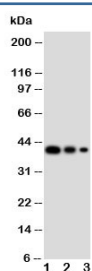


GATA2 Antibody (R30984)

Catalog No.	Formulation	Size
R30984	0.5mg/ml if reconstituted with 0.2ml sterile DI water	100 ug

Bulk quote request

Availability	1-3 business days
Species Reactivity	Human, Mouse, Rat
Format	Antigen affinity purified
Host	Rabbit
Clonality	Polyclonal (rabbit origin)
Isotype	Rabbit IgG
Purity	Antigen affinity
Buffer	Lyophilized from 1X PBS with 2.5% BSA and 0.025% sodium azide/thimerosal
UniProt	P23769
Applications	Western Blot : 0.5-1ug/ml
Limitations	This GATA2 antibody is available for research use only.



Western blot testing of GATA2 antibody and Lane 1: recombinant human protein 10ng;
2: 5ng; 3: 2.5ng

Description

The GATA family of transcription factors, which contain zinc fingers in their DNA binding domain, have emerged as candidate regulators of gene expression in hematopoietic cells. Ciciotte et al.(1997) mapped the mouse GATA2 gene to chromosome 6 by study of DNA from an interspecific backcross panel. They pointed out that the human gene had been mapped to chromosome 3 by Dorfman et al.(1992) using DNA from a panel of 12 rodent/human hybrids containing various human chromosomes and applying Southern blot analysis. By exon trapping using a PAC contig spanning a breakpoint region associated with myeloid leukemia, Wieser et al.(2000) mapped the GATA2 gene to chromosome 3q21. GATA2 is transcribed from telomere to centromere. GATA2 is expressed in hematopoietic progenitors, including early

erythroid cells, mast cells, and megakaryocytes, and also in nonhematopoietic embryonic stem cells.

Application Notes

The stated application concentrations are suggested starting amounts. Titration of the GATA2 antibody may be required due to differences in protocols and secondary/substrate sensitivity.

Immunogen

An amino acid sequence from the N-terminus of human GATA2 (DVFFNHLDSQGNPYY) was used as the immunogen for this GATA2 antibody (100% homologous in human, mouse and rat).

Storage

After reconstitution, the GATA2 antibody can be stored for up to one month at 4°C. For long-term, aliquot and store at -20°C. Avoid repeated freezing and thawing.