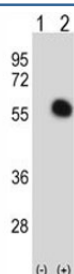


## GATA2 Antibody (F49854)

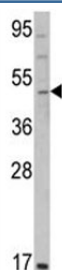
Catalog No.	Formulation	Size
F49854-0.4ML	In 1X PBS, pH 7.4, with 0.09% sodium azide	0.4 ml
F49854-0.08ML	In 1X PBS, pH 7.4, with 0.09% sodium azide	0.08 ml

[Bulk quote request](#)

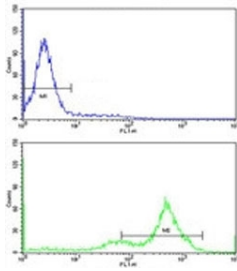
<b>Availability</b>	1-3 business days
<b>Species Reactivity</b>	Human
<b>Predicted Reactivity</b>	Chicken
<b>Format</b>	Purified
<b>Host</b>	Rabbit
<b>Clonality</b>	Polyclonal (rabbit origin)
<b>Isotype</b>	Rabbit Ig
<b>Purity</b>	Purified
<b>UniProt</b>	P23769
<b>Applications</b>	Western Blot : 1:1000 Flow Cytometry : 1:10-1:50
<b>Limitations</b>	This GATA2 antibody is available for research use only.



Western blot analysis of GATA2 antibody and 293 cell lysate either nontransfected (Lane 1) or transiently transfected (2) with the GATA2 gene. Predicted molecular weight ~51 kDa.



Western blot analysis of GATA2 antibody and K562 lysate. Predicted molecular weight ~51 kDa.



Flow cytometric analysis of K562 cells using GATA2 antibody (green) compared to a [negative control](#) (blue). FITC-conjugated goat-anti-rabbit secondary Ab was used for the analysis.

## Description

GATA2 is a member of the GATA family of zinc-finger transcription factors that are named for the consensus nucleotide sequence they bind in the promoter regions of target genes. This protein plays an essential role in regulating transcription of genes involved in the development and proliferation of hematopoietic and endocrine cell lineages.

## Application Notes

Titration of the GATA2 antibody may be required due to differences in protocols and secondary/substrate sensitivity.

## Immunogen

A portion of amino acids 380-407 from the human protein was used as the immunogen for this GATA2 antibody.

## Storage

Aliquot the GATA2 antibody and store frozen at -20oC or colder. Avoid repeated freeze-thaw cycles.