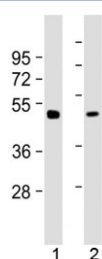


Gamma Tubulin Antibody / Tubg2 (F54171)

Catalog No.	Formulation	Size
F54171-0.2ML	In 1X PBS, pH 7.4, with 0.09% sodium azide	0.2 ml
F54171-0.05ML	In 1X PBS, pH 7.4, with 0.09% sodium azide	0.05 ml

[Bulk quote request](#)

Availability	1-3 business days
Species Reactivity	Mouse
Format	Antigen affinity purified
Host	Rabbit
Clonality	Polyclonal (rabbit origin)
Isotype	Rabbit Ig
Purity	Antigen affinity
UniProt	Q8VCK3
Applications	Western Blot : 1:1000-1:2000
Limitations	This Gamma Tubulin antibody is available for research use only.



Western blot testing of mouse 1) brain and 2) liver tissue lysate with Gamma Tubulin antibody at 1:2000. Predicted molecular weight ~51 kDa.

Description

Tubulin is the major constituent of microtubules. The gamma chain is found at microtubule organizing centers (MTOC) such as the spindle poles or the centrosome. Pericentriolar matrix component that regulates alpha/beta chain minus-end nucleation, centrosome duplication and spindle formation (By similarity).

Application Notes

The stated application concentrations are suggested starting points. Titration of the Gamma Tubulin antibody may be required due to differences in protocols and secondary/substrate sensitivity.

Immunogen

A portion of amino acids 400-434 from mouse Gamma 2 Tubulin was used as the immunogen for the Gamma Tubulin antibody.

Storage

Aliquot the Gamma Tubulin antibody and store frozen at -20oC or colder. Avoid repeated freeze-thaw cycles.