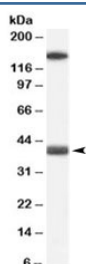


GALR1 Antibody (R34235)

Catalog No.	Formulation	Size
R34235-100UG	0.5 mg/ml in 1X TBS, pH7.3, with 0.5% BSA (US sourced) and 0.02% sodium azide	100 ug

[Bulk quote request](#)

Availability	1-3 business days
Species Reactivity	Human
Format	Antigen affinity purified
Clonality	Polyclonal (goat origin)
Isotype	Goat Ig
Purity	Antigen affinity
Gene ID	2587
Applications	Western Blot : 0.1-0.3ug/ml ELISA (peptide) LOD : 1:64000
Limitations	This GALR1 antibody is available for research use only.



Western blot testing of human heart lysate with GALR1 antibody at 0.1ug/ml. The expected ~40kDa band and the additional ~150kDa band are both blocked by the immunizing peptide.

Description

Additional name(s) for this target protein: Galanin receptor 1

Application Notes

Optimal dilution of the GALR1 antibody should be determined by the researcher.

Immunogen

Amino acids HLSDTKENKSRID were used as the immunogen for this GALR1 antibody.

Storage

Aliquot and store the GALR1 antibody at -20oC.