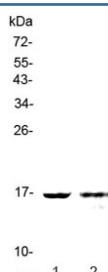


Galectin 10 Antibody (RQ4368)

Catalog No.	Formulation	Size
RQ4368	0.5mg/ml if reconstituted with 0.2ml sterile DI water	100 ug

Bulk quote request

Availability	1-3 business days
Species Reactivity	Human
Format	Antigen affinity purified
Host	Rabbit
Clonality	Polyclonal (rabbit origin)
Isotype	Rabbit IgG
Purity	Antigen affinity purified
Buffer	Lyophilized from 1X PBS with 2% Trehalose and 0.025% sodium azide
UniProt	Q05315
Localization	Nucleus
Applications	Western Blot : 0.5-1ug/ml Direct ELISA : 0.1-0.5ug/ml
Limitations	This Galectin 10 antibody is available for research use only.



Western blot testing of human 1) HL-60 and 2) PANC-1 lysate with Galectin 10 antibody at 0.5ug/ml. Predicted molecular weight ~16 kDa.

Description

Eosinophil lysophospholipase, also called Galectin 10 or Gal-10, is an enzyme that in humans is encoded by the *CLC* gene. Lysophospholipases are enzymes that act on biological membranes to regulate the multifunctional lysophospholipids. The protein encoded by this gene is a lysophospholipase expressed in eosinophils and basophils. It hydrolyzes lysophosphatidylcholine to glycerophosphocholine and a free fatty acid. This protein may possess

carbohydrate or IgE-binding activities. It is both structurally and functionally related to the galectin family of beta-galactoside binding proteins. It may be associated with inflammation and some myeloid leukemias.

Application Notes

Optimal dilution of the Galectin 10 antibody should be determined by the researcher.

Immunogen

A recombinant human protein corresponding to amino acids S2-R142 was used as the immunogen for the Galectin 10 antibody.

Storage

After reconstitution, the Galectin 10 antibody can be stored for up to one month at 4°C. For long-term, aliquot and store at -20°C. Avoid repeated freezing and thawing.