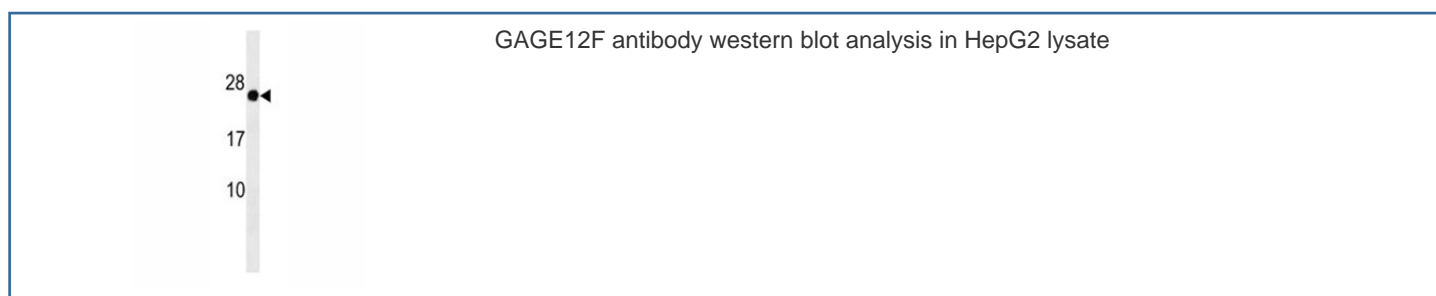


GAGE12F Antibody (F40051)

| Catalog No. | Formulation | Size |
|---------------|--|---------|
| F40051-0.4ML | In 1X PBS, pH 7.4, with 0.09% sodium azide | 0.4 ml |
| F40051-0.08ML | In 1X PBS, pH 7.4, with 0.09% sodium azide | 0.08 ml |

[Bulk quote request](#)

| | |
|---------------------------|---|
| Availability | 1-3 business days |
| Species Reactivity | Human |
| Format | Antigen affinity purified |
| Host | Rabbit |
| Clonality | Polyclonal (rabbit origin) |
| Isotype | Rabbit Ig |
| Purity | Antigen affinity |
| UniProt | P0CL80 |
| Applications | Western Blot : 1:1000 |
| Limitations | This GAGE12F antibody is available for research use only. |



Description

The function of this protein remains unknown.

Application Notes

Titration of the GAGE12F antibody may be required due to differences in protocols and secondary/substrate sensitivity.

Immunogen

A portion of amino acids 1-30 from the human protein was used as the immunogen for this GAGE12F antibody.

Storage

Aliquot the GAGE12F antibody and store frozen at -20oC or colder. Avoid repeated freeze-thaw cycles.