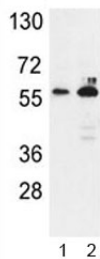


G6PD Antibody (F49019)

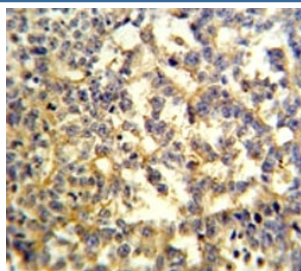
Catalog No.	Formulation	Size
F49019-0.4ML	In 1X PBS, pH 7.4, with 0.09% sodium azide	0.4 ml
F49019-0.08ML	In 1X PBS, pH 7.4, with 0.09% sodium azide	0.08 ml

[Bulk quote request](#)

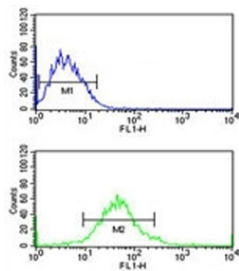
Availability	1-3 business days
Species Reactivity	Human
Format	Purified
Host	Rabbit
Clonality	Polyclonal (rabbit origin)
Isotype	Rabbit Ig
Purity	Purified
UniProt	P11413
Applications	Western Blot : 1:1000 IHC (Paraffin) : 1:50-1:100 Flow Cytometry : 1:10-1:50
Limitations	This G6PD antibody is available for research use only.



Western blot analysis of G6PD antibody and 1) K562, 2) MCF-7 lysate. Predicted molecular weight ~59 kDa.



G6PD antibody IHC analysis in formalin fixed and paraffin embedded testis.



G6PD antibody flow cytometric analysis of MCF-7 cells (green) compared to a [negative control](#) (blue). FITC-conjugated goat-anti-rabbit secondary Ab was used for the analysis.

Description

G6PD encodes glucose-6-phosphate dehydrogenase. This protein is a cytosolic enzyme encoded by a housekeeping X-linked gene whose main function is to produce NADPH, a key electron donor in the defense against oxidizing agents and in reductive biosynthetic reactions. G6PD is remarkable for its genetic diversity. Many variants of G6PD, mostly produced from missense mutations, have been described with wide ranging levels of enzyme activity and associated clinical symptoms. G6PD deficiency may cause neonatal jaundice, acute hemolysis, or severe chronic non-spherocytic hemolytic anemia.

Application Notes

Titration of the G6PD antibody may be required due to differences in protocols and secondary/substrate sensitivity.

Immunogen

A portion of amino acids 297-326 from the human protein was used as the immunogen for this G6PD antibody.

Storage

Aliquot the G6PD antibody and store frozen at -20oC or colder. Avoid repeated freeze-thaw cycles.