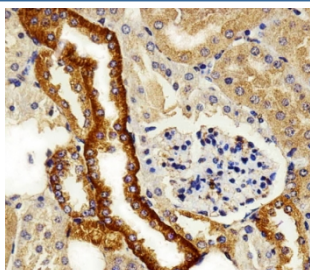


FXJD6 Antibody (F54744)

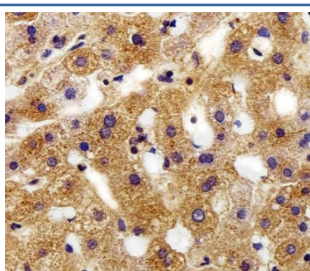
Catalog No.	Formulation	Size
F54744-0.4ML	In 1X PBS, pH 7.4, with 0.09% sodium azide	0.4 ml
F54744-0.08ML	In 1X PBS, pH 7.4, with 0.09% sodium azide	0.08 ml

[Bulk quote request](#)

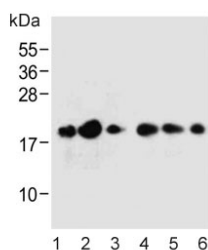
Availability	1-3 business days
Species Reactivity	Human, Mouse, Rat
Format	Purified
Host	Rabbit
Clonality	Polyclonal (rabbit origin)
Isotype	Rabbit Ig
Purity	Antigen affinity purified
UniProt	Q9H0Q3
Applications	Immunohistochemistry (FFPE) : 1:25-1:50 Flow Cytometry : 1:25 (1x10e6 cells) Western Blot : 1:500-1:1000
Limitations	This FXJD6 antibody is available for research use only.



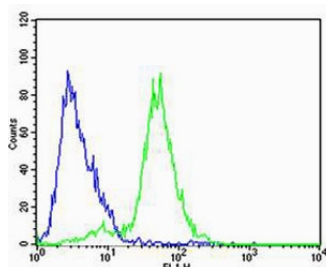
IHC testing of FFPE mouse kidney tissue with FXJD6 antibody. HIER: steam section in pH6 citrate buffer for 20 min and allow to cool prior to staining.



IHC testing of FFPE human liver tissue with FXJD6 antibody. HIER: steam section in pH6 citrate buffer for 20 min and allow to cool prior to staining.



Western blot testing of 1) human cerebellum, 2) human brain, 3) human SH-SY5Y, 4) mouse brain, 5) mouse cerebellum and 6) rat brain tissue lysate with FXYD6 antibody. Expected molecular weight: 11-20 kDa.



Flow cytometry testing of human SH-SY5Y cells with FXYD6 antibody; Blue=isotype control, Green= FXYD6 antibody.

Application Notes

The stated application concentrations are suggested starting points. Titration of the FXYD6 antibody may be required due to differences in protocols and secondary/substrate sensitivity.

Immunogen

A portion of amino acids 81-115 from the human protein was used as the immunogen for the FXYD6 antibody.

Storage

Aliquot the FXYD6 antibody and store frozen at -20oC or colder. Avoid repeated freeze-thaw cycles.