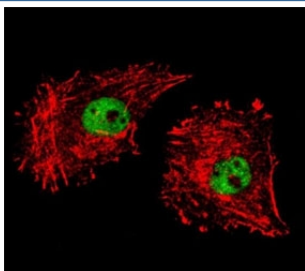


FUS Antibody (F40524)

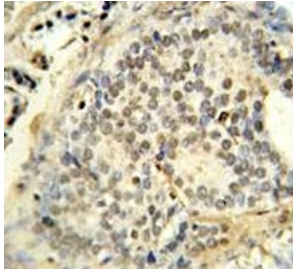
Catalog No.	Formulation	Size
F40524-0.4ML	In 1X PBS, pH 7.4, with 0.09% sodium azide	0.4 ml
F40524-0.08ML	In 1X PBS, pH 7.4, with 0.09% sodium azide	0.08 ml

[Bulk quote request](#)

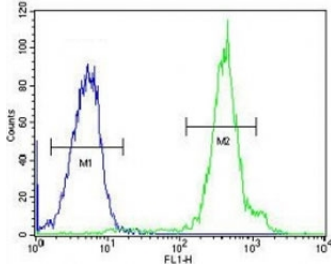
Availability	1-3 business days
Species Reactivity	Human, Mouse
Predicted Reactivity	Bovine
Format	Antigen affinity purified
Host	Rabbit
Clonality	Polyclonal (rabbit origin)
Isotype	Rabbit Ig
Purity	Antigen affinity
UniProt	P35637
Applications	Western Blot : 1:1000 IHC (Paraffin) : 1:50-1:100 Flow Cytometry : 1:10-1:50 Immunofluorescence : 1:10-1:50
Limitations	This FUS antibody is available for research use only.



Confocal immunofluorescent analysis of FUS antibody with MDA-MB231 cells followed by Alexa Fluor 488-conjugated goat anti-rabbit IgG (green). Actin filaments have been labeled with Alexa Fluor 555 Phalloidin (red).



FUS antibody immunohistochemistry analysis in formalin fixed and paraffin embedded human prostate carcinoma.



FUS antibody flow cytometric analysis of HeLa cells (right histogram) compared to a negative control (left histogram). FITC-conjugated goat-anti-rabbit secondary Ab was used for the analysis.



FUS antibody western blot analysis in mouse cerebellum tissue lysate.

Description

This gene encodes a multifunctional protein component of the heterogeneous nuclear ribonucleoprotein (hnRNP) complex. The hnRNP complex is involved in pre-mRNA splicing and the export of fully processed mRNA to the cytoplasm. This protein belongs to the FET family of RNA-binding proteins which have been implicated in cellular processes that include regulation of gene expression, maintenance of genomic integrity and mRNA/microRNA processing. Alternative splicing results in multiple transcript variants. Defects in this gene result in amyotrophic lateral sclerosis type 6.

Application Notes

Titration of the FUS antibody may be required due to differences in protocols and secondary/substrate sensitivity.

Immunogen

A portion of amino acids 499-526 from the human protein was used as the immunogen for this FUS antibody.

Storage

Aliquot the FUS antibody and store frozen at -20oC or colder. Avoid repeated freeze-thaw cycles.

