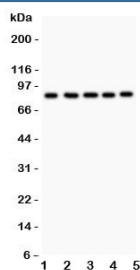


FOXM1 Antibody (R31607)

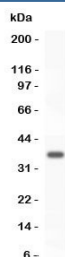
Catalog No.	Formulation	Size
R31607	0.5mg/ml if reconstituted with 0.2ml sterile DI water	100 ug

Bulk quote request

Availability	1-3 business days
Species Reactivity	Human
Format	Antigen affinity purified
Host	Rabbit
Clonality	Polyclonal (rabbit origin)
Isotype	Rabbit IgG
Purity	Antigen affinity
Buffer	Lyophilized from 1X PBS with 2.5% BSA and 0.025% sodium azide
Gene ID	2305
Applications	Western Blot : 0.5-1ug/ml
Limitations	This FOXM1 antibody is available for research use only.



Western blot testing of FOXM1 antibody and Lane 1: HeLa; 2: COLO320; 3: SW620; 4: SKOV; 5: MCD-7. Predicted/observed size ~84KD



Western blot testing of FOXM1 antibody and recombinant human protein (0.5ng)

Description

Forkhead box protein M1 is encoded by the FOXM1 gene. It is a member of the FOX family of transcription factors. FOXM1 is known to play a key role in cell cycle progression where endogenous FOXM1 expression peaks at S and G2/M phases and also in the control of cell proliferation. The gene is now known as a human proto-oncogene. Abnormal upregulation of the protein is involved in the oncogenesis of basal cell carcinoma, the most common human cancer worldwide. It is hypothesized that FOXM1 induces cancer initiation through stem/progenitor cell expansion. Additionally, FOXM1 has been shown to modulate the epigenome. It was found that overexpression of the protein brain washes normal cells to adopt cancer-like epigenome.

Application Notes

The stated application concentrations are suggested starting amounts. Titration of the FOXM1 antibody may be required due to differences in protocols and secondary/substrate sensitivity.

Immunogen

Human partial recombinant protein (AA 411-763) was used as the immunogen for this FOXM1 antibody.

Storage

After reconstitution, the FOXM1 antibody can be stored for up to one month at 4oC. For long-term, aliquot and store at -20oC. Avoid repeated freezing and thawing.