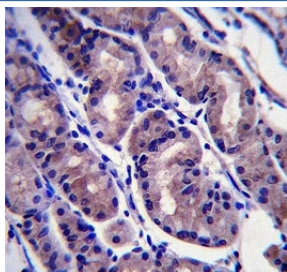


## FOXA2 Antibody (F41217)

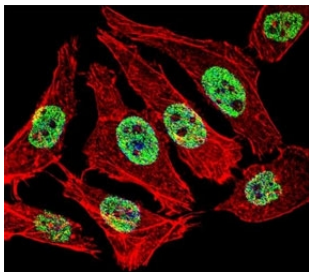
Catalog No.	Formulation	Size
F41217-0.4ML	In 1X PBS, pH 7.4, with 0.09% sodium azide	0.4 ml
F41217-0.08ML	In 1X PBS, pH 7.4, with 0.09% sodium azide	0.08 ml

[Bulk quote request](#)

<b>Availability</b>	1-3 business days
<b>Species Reactivity</b>	Human
<b>Predicted Reactivity</b>	Mouse, Rat
<b>Format</b>	Antigen affinity purified
<b>Host</b>	Rabbit
<b>Clonality</b>	Polyclonal (rabbit origin)
<b>Isotype</b>	Rabbit Ig
<b>Purity</b>	Antigen affinity
<b>UniProt</b>	Q9Y261
<b>Applications</b>	Western Blot : 1:1000 IHC (Paraffin) : 1:10-1:50 Immunofluorescence : 1:10-1:50
<b>Limitations</b>	This FOXA2 antibody is available for research use only.



FOXA2 antibody immunohistochemistry analysis in formalin fixed and paraffin embedded human stomach tissue.



Fluorescent confocal image of A549 cell stained with FOXA2 antibody at 1:25. FOXA2 immunoreactivity is localized to the nucleus.



FOXA2 antibody western blot analysis in MDA-MB231 lysate. Predicted molecular weight: 50 kDa.

## Description

This gene encodes a member of the forkhead class of DNA-binding proteins. These hepatocyte nuclear factors are transcriptional activators for liver-specific genes such as albumin and transthyretin, and they also interact with chromatin. Similar family members in mice have roles in the regulation of metabolism and in the differentiation of the pancreas and liver. This gene has been linked to sporadic cases of maturity-onset diabetes of the young. Transcript variants encoding different isoforms have been identified for this gene.

## Application Notes

Titration of the FOXA2 antibody may be required due to differences in protocols and secondary/substrate sensitivity.

## Immunogen

A portion of amino acids 128-157 from the human protein was used as the immunogen for this FOXA2 antibody.

## Storage

Aliquot the FOXA2 antibody and store frozen at -20°C or colder. Avoid repeated freeze-thaw cycles.