

## FOLH1B Antibody / PSMAL (F54413)

Catalog No.	Formulation	Size
F54413-0.4ML	In 1X PBS, pH 7.4, with 0.09% sodium azide	0.4 ml
F54413-0.08ML	In 1X PBS, pH 7.4, with 0.09% sodium azide	0.08 ml

[Bulk quote request](#)

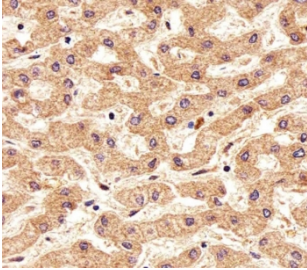
<b>Availability</b>	1-3 business days
<b>Species Reactivity</b>	Human
<b>Format</b>	Purified
<b>Host</b>	Rabbit
<b>Clonality</b>	Polyclonal (rabbit origin)
<b>Isotype</b>	Rabbit Ig
<b>Purity</b>	Antigen affinity purified
<b>UniProt</b>	Q9HBA9
<b>Localization</b>	Cytoplasmic
<b>Applications</b>	Immunohistochemistry (FFPE) : 1:25 Western Blot : 1:500-1:2000 Flow Cytometry : 1:25 (1x10 <sup>6</sup> cells)
<b>Limitations</b>	This FOLH1B antibody is available for research use only.



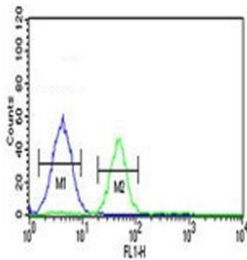
Western blot testing of human K562 cell lysate with FOLH1B antibody. Predicted molecular weight ~50 kDa.



Western blot testing of human kidney lysate with FOLH1B antibody. Predicted molecular weight ~50 kDa.



IHC testing of FFPE human liver tissue with FOLH1B antibody. HIER: steam section in pH6 citrate buffer for 20 min and allow to cool prior to staining.



Flow cytometry testing of human K562 cells with FOLH1B antibody; Blue=isotype control, Green= FOLH1B antibody.

## Description

PSMAL has both folate hydrolase and N-acetylated-alpha-linked-acidic dipeptidase (NAALADase) activity (By similarity). PSMAL exhibits a dipeptidyl-peptidase IV type activity

## Application Notes

The stated application concentrations are suggested starting points. Titration of the FOLH1B antibody may be required due to differences in protocols and secondary/substrate sensitivity.

## Immunogen

A portion of amino acids 155-183 from the human protein were used as the immunogen for the FOLH1B antibody.

## Storage

Aliquot the FOLH1B antibody and store frozen at -20oC or colder. Avoid repeated freeze-thaw cycles.