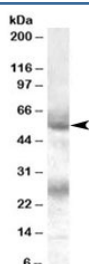


FLVCR Antibody (R34680)

Catalog No.	Formulation	Size
R34680-100UG	0.5 mg/ml in 1X TBS, pH7.3, with 0.5% BSA (US sourced) and 0.02% sodium azide	100 ug

[Bulk quote request](#)

Availability	1-3 business days
Species Reactivity	Human
Format	Antigen affinity purified
Clonality	Polyclonal (goat origin)
Isotype	Goat Ig
Purity	Antigen affinity
Gene ID	28982
Applications	Western Blot : 0.1-0.3ug/ml ELISA (peptide) LOD : 1:128000
Limitations	This FLVCR antibody is available for research use only.



Western blot testing of human bone marrow lysate with FLVCR antibody at 0.1ug/ml. The expected ~55kDa band and the additional ~26kDa band are blocked by the immunizing peptide.

Description

Additional name(s) for this target protein: Feline leukemia virus subgroup C cellular receptor; FLVCR1

Application Notes

Optimal dilution of the FLVCR antibody should be determined by the researcher.

Immunogen

Amino acids KTVMLSKQSESAI were used as the immunogen for this FLVCR antibody.

Storage

Aliquot and store the FLVCR antibody at -20oC.