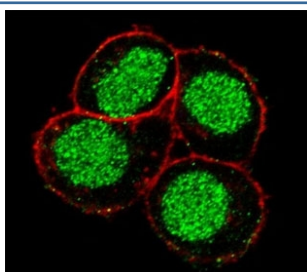


## FLI1 Antibody (F49647)

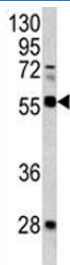
Catalog No.	Formulation	Size
F49647-0.4ML	In 1X PBS, pH 7.4, with 0.09% sodium azide	0.4 ml
F49647-0.08ML	In 1X PBS, pH 7.4, with 0.09% sodium azide	0.08 ml

[Bulk quote request](#)

<b>Availability</b>	1-3 business days
<b>Species Reactivity</b>	Human, Mouse
<b>Predicted Reactivity</b>	Rat, Bovine, Chicken, Zebrafish, Xenopus, Drosophila
<b>Format</b>	Purified
<b>Host</b>	Rabbit
<b>Clonality</b>	Polyclonal (rabbit origin)
<b>Isotype</b>	Rabbit Ig
<b>Purity</b>	Purified
<b>UniProt</b>	Q01543
<b>Applications</b>	Western Blot : 1:1000 Immunofluorescence : 1:10-1:50
<b>Limitations</b>	This FLI1 antibody is available for research use only.



Confocal immunofluorescent analysis of FLI1 antibody with HeLa cells followed by Alexa Fluor 488-conjugated goat anti-rabbit IgG (green). Actin filaments have been labeled with Alexa Fluor 555 Phalloidin (red).



Western blot analysis of FLI1 antibody and mouse lung tissue lysate.

## Description

FLI1 is a sequence-specific transcriptional activator. It recognizes the DNA sequence 5'-C[CA]GGAAGT-3'.

## Application Notes

Titration of the FLI1 antibody may be required due to differences in protocols and secondary/substrate sensitivity.

## Immunogen

A portion of amino acids 299-328 from the human protein was used as the immunogen for this FLI1 antibody.

## Storage

Aliquot the FLI1 antibody and store frozen at -20oC or colder. Avoid repeated freeze-thaw cycles.