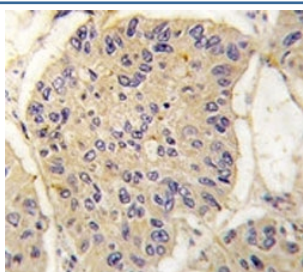


## FKBP12 Antibody (F50742)

Catalog No.	Formulation	Size
F50742-0.4ML	In 1X PBS, pH 7.4, with 0.09% sodium azide	0.4 ml
F50742-0.08ML	In 1X PBS, pH 7.4, with 0.09% sodium azide	0.08 ml

[Bulk quote request](#)

<b>Availability</b>	1-3 business days
<b>Species Reactivity</b>	Human
<b>Predicted Reactivity</b>	Bovine, Mouse, Rabbit, Rat
<b>Format</b>	Purified
<b>Host</b>	Rabbit
<b>Clonality</b>	Polyclonal (rabbit origin)
<b>Isotype</b>	Rabbit Ig
<b>Purity</b>	Purified
<b>UniProt</b>	P62942
<b>Applications</b>	Western Blot : 1:1000 IHC (Paraffin) : 1:10-1:50
<b>Limitations</b>	This FKBP12 antibody is available for research use only.



IHC analysis of FFPE human lung carcinoma tissue stained with FKBP12 antibody



Western blot analysis of FKBP12 antibody and 293 cell lysate either nontransfected (Lane 1) or transiently transfected with the FKBP12 gene (2).

## Description

FKBP12 is a member of the immunophilin protein family, which play a role in immunoregulation and basic cellular processes involving protein folding and trafficking. The protein is a cis-trans prolyl isomerase that binds the immunosuppressants FK506 and rapamycin. It interacts with several intracellular signal transduction proteins including type I TGF-beta receptor. It also interacts with multiple intracellular calcium release channels, and coordinates multi-protein complex formation of the tetrameric skeletal muscle ryanodine receptor. In mouse, deletion of this homologous gene causes congenital heart disorder known as noncompaction of left ventricular myocardium.

## Application Notes

Titration of the FKBP12 antibody may be required due to differences in protocols and secondary/substrate sensitivity.

## Immunogen

A portion of amino acids 43-74 from the human protein was used as the immunogen for this FKBP12 antibody.

## Storage

Aliquot the FKBP12 antibody and store frozen at -20oC or colder. Avoid repeated freeze-thaw cycles.