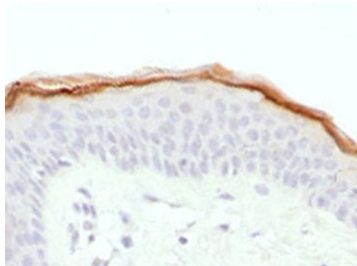


Filaggrin Antibody [clone FLG1-1] (V3861)

Catalog No.	Formulation	Size
V3861-100UG	0.2 mg/ml in 1X PBS with 0.1 mg/ml BSA (US sourced) and 0.05% sodium azide	100 ug
V3861-20UG	0.2 mg/ml in 1X PBS with 0.1 mg/ml BSA (US sourced) and 0.05% sodium azide	20 ug
V3861SAF-100UG	1 mg/ml in 1X PBS; BSA free, sodium azide free	100 ug

[Bulk quote request](#)

Availability	1-3 business days
Species Reactivity	Human
Format	Purified
Host	Mouse
Clonality	Monoclonal (mouse origin)
Isotype	Mouse IgG2b, kappa
Clone Name	FLG1-1
Purity	Protein G affinity chromatography
UniProt	P20930
Localization	Cytoplasmic
Applications	Immunohistochemistry (FFPE) : 1-2ug/ml for 30 min at RT
Limitations	This Filaggrin antibody is available for research use only.



IHC testing of FFPE human skin with Filaggrin antibody (clone FLG1-1). Required HIER: boil tissue sections in pH 9 10mM Tris with 1mM EDTA for 10-20 min.

Description

Filaggrin (FLG) aggregates keratin intermediate filaments and promotes disulfide-bond formation among the intermediate filaments during terminal differentiation of mammalian epidermis. [UniProt]

Application Notes

The stated application concentrations are suggested starting points. Titration of the Filaggrin antibody may be required due to differences in protocols and secondary/substrate sensitivity.

Immunogen

A portion of amino acids 998-1104 from the human protein were used as the immunogen for this Filaggrin antibody.

Storage

Store the Filaggrin antibody at 2-8oC (with azide) or aliquot and store at -20oC or colder (without azide).