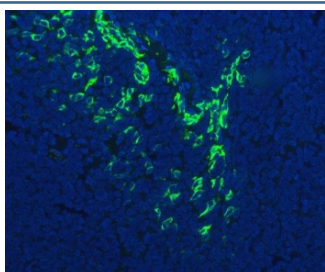


FDCSP Antibody (R32777)

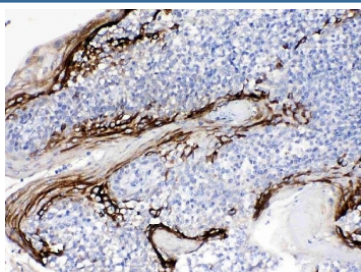
| Catalog No. | Formulation | Size |
|-------------|---|--------|
| R32777 | 0.5mg/ml if reconstituted with 0.2ml sterile DI water | 100 ug |

Bulk quote request

| | |
|---------------------------|--|
| Availability | 1-3 business days |
| Species Reactivity | Human |
| Format | Antigen affinity purified |
| Host | Rabbit |
| Clonality | Polyclonal (rabbit origin) |
| Isotype | Rabbit IgG |
| Purity | Antigen affinity |
| Buffer | Lyophilized from 1X PBS with 2% Trehalose and 0.025% sodium azide |
| UniProt | Q8NFU4 |
| Localization | Cytoplasmic, membranous, secreted |
| Applications | Immunohistochemistry (FFPE) : 1-2ug/ml Immunofluorescence (FFPE) : 5ug/ml |
| Limitations | This FDCSP antibody is available for research use only. |



Immunofluorescent staining of FFPE human tonsil tissue with FDCSP antibody (green) and DAPI nuclear stain (blue). HIER: steam section in pH8 EDTA buffer for 20 min.



IHC testing of FFPE human tonsil tissue with FDCSP antibody at 1ug/ml. Required HIER: steam section in pH6 citrate buffer for 20 min and allow to cool prior to testing.

Description

FDC-SP or follicular dendritic cell-secreted protein, is a small, secreted protein, located on chromosome 4 in humans. FDC-SP is a 68-amino acid protein containing a signal peptide at its N terminus, which is used for directing the transport of the protein. This protein specifically binds to activated B cells, and functions as a regulator of antibody responses. It is also thought to contribute to tumor metastases by promoting cancer cell migration and invasion.

Application Notes

Optimal dilution of the FDCSP antibody should be determined by the researcher.

Immunogen

Amino acids 18-51 (FPVSQDQEREKRSISDSDELASGFFVFPYPYPFR) from the human protein were used as the immunogen for the FDCSP antibody.

Storage

After reconstitution, the FDCSP antibody can be stored for up to one month at 4°C. For long-term, aliquot and store at -20°C. Avoid repeated freezing and thawing.