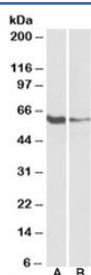


FCRL2 Antibody (R33515)

Catalog No.	Formulation	Size
R33515-100UG	0.5 mg/ml in 1X TBS, pH7.3, with 0.5% BSA (US sourced) and 0.02% sodium azide	100 ug

[Bulk quote request](#)

Availability	1-3 business days
Species Reactivity	Human
Format	Antigen affinity purified
Clonality	Polyclonal (goat origin)
Isotype	Goat Ig
Purity	Antigen affinity
Gene ID	79368
Applications	Western Blot : 1-3ug/ml ELISA (peptide) LOD : 1:16000
Limitations	This FCRL2 antibody is available for research use only.



Western blot testing of human tonsil [A] and Daudi [B] lysates with FCRL2 antibody at 1ug/ml. Predicted molecular weight: ~56kDa.

Description

Additional name(s) for this target protein: Fc receptor-like 2

Application Notes

Optimal dilution of the FCRL2 antibody should be determined by the researcher.

Immunogen

Amino acids DKTSNIVKIKVQE were used as the immunogen for this FCRL2 antibody.

Storage

Aliquot and store the FCRL2 antibody at -20oC.