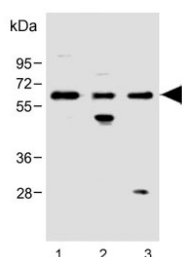


## FCGR1B Antibody (F55026)

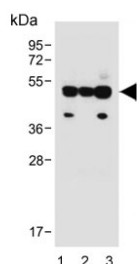
Catalog No.	Formulation	Size
F55026-0.4ML	In 1X PBS, pH 7.4, with 0.09% sodium azide	0.4 ml
F55026-0.08ML	In 1X PBS, pH 7.4, with 0.09% sodium azide	0.08 ml

**Bulk quote request**

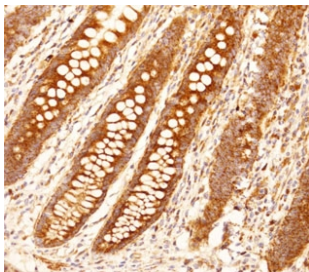
<b>Availability</b>	1-3 business days
<b>Species Reactivity</b>	Human
<b>Format</b>	Purified
<b>Clonality</b>	Polyclonal (rabbit origin)
<b>Isotype</b>	Rabbit IgG
<b>Purity</b>	Antigen affinity purified
<b>UniProt</b>	Q92637
<b>Applications</b>	Immunohistochemistry (FFPE) : 1:50-1:100 Western Blot : 1:500 Flow Cytometry : 1:10-1:50 (per million cells)
<b>Limitations</b>	This FCGR1B antibody is available for research use only.



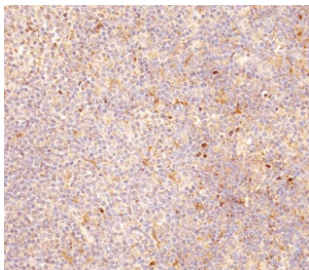
Western blot testing of human 1) CCRF-CEM, 2) ThP-1 and 3) HeLa cell lysate with FCGR1B antibody. Predicted molecular weight: 22-32 kDa but may be observed at higher molecular weights due to glycosylation.



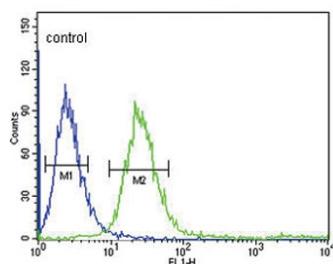
Western blot testing of human 1) HL60, 2) HeLa and 3) K562 cell lysate with FCGR1B antibody. Predicted molecular weight: 22-32 kDa but may be observed at higher molecular weights due to glycosylation.



IHC testing of FFPE human appendix tissue with FCGR1B antibody. HIER: steam section in pH9 EDTA buffer for 20 min and allow to cool prior to staining.



IHC testing of FFPE human tonsil tissue with FCGR1B antibody. HIER: steam section in pH9 EDTA buffer for 20 min and allow to cool prior to staining.



Flow cytometry testing of human CCRF-CEM cells with FCGR1B antibody; Blue=isotype control, Green= FCGR1B antibody.

## Description

FCGR1B may bind to the Fc region of immunoglobulins gamma with a low affinity compared to FCGR1A. This protein may function in the humoral immune response.

## Application Notes

The stated application concentrations are suggested starting points. Titration of the FCGR1B antibody may be required due to differences in protocols and secondary/substrate sensitivity.

## Immunogen

A portion of amino acids 248-276 from the human protein was used as the immunogen for the FCGR1B antibody.

## Storage

Aliquot the FCGR1B antibody and store frozen at -20oC or colder. Avoid repeated freeze-thaw cycles.