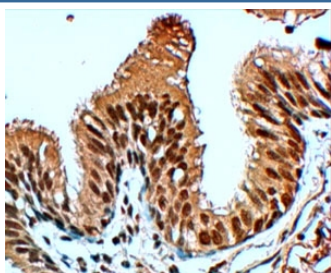


FBXL12 Antibody (R35527)

Catalog No.	Formulation	Size
R35527-100UG	0.5 mg/ml in 1X TBS, pH7.3, with 0.5% BSA (US sourced) and 0.02% sodium azide	100 ug

Bulk quote request

Availability	1-3 business days
Species Reactivity	Human
Predicted Reactivity	Dog, Mouse, Rat
Format	Antigen affinity purified
Clonality	Polyclonal (goat origin)
Isotype	Goat Ig
Purity	Antigen affinity
Gene ID	54850
Applications	Immunohistochemistry (FFPE) : 4-6ug/ml ELISA (peptide) LOD : 1:32000
Limitations	This FBXL12 antibody is available for research use only.



IHC testing of FFPE human lung with FBXL12 antibody at 4ug/ml. HIER: steamed with pH6 citrate buffer, HRP-staining.

Description

Additional name(s) for this target protein: F-box and leucine-rich repeat protein 12

Application Notes

Optimal dilution of the FBXL12 antibody should be determined by the researcher.

Immunogen

Amino acids RACPKESMDWWM were used as the immunogen for this FBXL12 antibody.

Storage

Aliquot and store the FBXL12 antibody at -20oC.