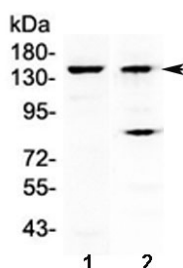


FBXL11 Antibody / KDM2A (RQ4120)

Catalog No.	Formulation	Size
RQ4120	0.5mg/ml if reconstituted with 0.2ml sterile DI water	100 ug

Bulk quote request

Availability	1-3 business days
Species Reactivity	Human, Mouse
Predicted Reactivity	Rat
Format	Antigen affinity purified
Host	Rabbit
Clonality	Polyclonal (rabbit origin)
Isotype	Rabbit IgG
Purity	Antigen affinity purified
Buffer	Lyophilized from 1X PBS with 2% Trehalose and 0.025% sodium azide
UniProt	Q9Y2K7
Applications	Western Blot : 0.5-1ug/ml
Limitations	This FBXL11 antibody is available for research use only.



Western blot testing of 1) mouse liver and 2) human A431 lysate with FBXL11 antibody at 0.5ug/ml. Predicted molecular weight ~133 kDa.

Description

Lysine-specific demethylase 2A (KDM2A) also known as F-box and leucine-rich repeat protein 11 (FBXL11) is an enzyme that in humans is encoded by the KDM2A gene. This gene encodes a member of the F-box protein family which is characterized by an approximately 40 amino acid motif, the F-box. The F-box proteins constitute one of the four subunits of ubiquitin protein ligase complex called SCFs (SKP1-cullin-F-box), which function in phosphorylation-dependent ubiquitination. The F-box proteins are divided into 3 classes: Fbws containing WD-40 domains, Fbls containing leucine-

rich repeats, and Fbxs containing either different protein-protein interaction modules or no recognizable motifs. The protein encoded by this gene belongs to the Fbls class and, in addition to an F-box, contains at least six highly degenerated leucine-rich repeats. This family member plays a role in epigenetic silencing. It nucleates at CpG islands and specifically demethylates both mono- and di-methylated lysine-36 of histone H3. Alternative splicing results in multiple transcript variants.

Application Notes

Optimal dilution of the FBXL11 antibody should be determined by the researcher.

Immunogen

Amino acids KRTFDLEEKLHTNKYNANFVTFMEGKDFNVEYIQR from the human protein were used as the immunogen for the FBXL11 antibody.

Storage

After reconstitution, the FBXL11 antibody can be stored for up to one month at 4oC. For long-term, aliquot and store at -20oC. Avoid repeated freezing and thawing.