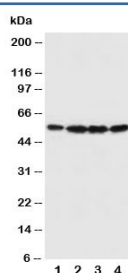


## Fascin Antibody (R30651)

Catalog No.	Formulation	Size
R30651	0.5mg/ml if reconstituted with 0.2ml sterile DI water	100 ug

**Bulk quote request**

<b>Availability</b>	1-3 business days
<b>Species Reactivity</b>	Human, Mouse, Rat
<b>Format</b>	Antigen affinity purified
<b>Host</b>	Rabbit
<b>Clonality</b>	Polyclonal (rabbit origin)
<b>Isotype</b>	Rabbit IgG
<b>Purity</b>	Antigen affinity
<b>Buffer</b>	Lyophilized from 1X PBS with 2.5% BSA and 0.025% sodium azide/thimerosal
<b>UniProt</b>	Q16658
<b>Applications</b>	Western Blot : 0.5-1ug/ml
<b>Limitations</b>	This Fascin antibody is available for research use only.



Western blot testing of Fascin antibody and Lane 1: U87; 2: A549; 3: MCF-7; 4: HT1080 cell lysate. Predicted molecular weight ~55kDa.

## Description

Fascin is a actin cross-linking protein. The gene contains 5 exons and spans 7 kb. It is a 54-58 kilodalton monomeric actin filament bundling protein originally isolated from sea urchin egg but also found in Drosophila and vertebrates, including humans. Fascin is spaced at 11 nanometre intervals along the filament. The bundles in cross section are seen to be hexagonally packed, and the longitudinal spacing is compatible with a model where fascin cross-links at alternating 4 and 5 actins. It is calcium insensitive and monomeric. Fascin binds beta-catenin, and colocalizes with it at the leading edges and borders of epithelial and endothelial cells. The role of Fascin in regulating cytoskeletal structures for the maintenance of cell adhesion, coordinating motility and invasion through interactions with signalling pathways is an active area of

research especially from the cancer biology perspective. Abnormal fascin expression or function has been implicated in breast cancer, colon cancer, esophageal squamous cell carcinoma, gallbladder cancer and prostate cancer.

## Application Notes

The stated application concentrations are suggested starting amounts. Titration of the Fascin antibody may be required due to differences in protocols and secondary/substrate sensitivity.

## Immunogen

An amino acid sequence from the N-terminus of human Fascin (DDGRWSLQSEAHRRYFG) was used as the immunogen for this Fascin antibody (100% homologous in human, mouse and rat).

## Storage

After reconstitution, the Fascin antibody can be stored for up to one month at 4°C. For long-term, aliquot and store at -20°C. Avoid repeated freezing and thawing.