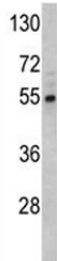


Fascin Antibody (F49832)

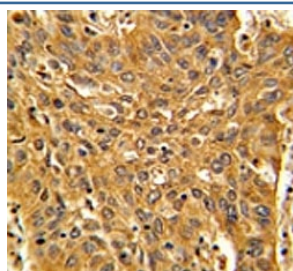
Catalog No.	Formulation	Size
F49832-0.4ML	In 1X PBS, pH 7.4, with 0.09% sodium azide	0.4 ml
F49832-0.08ML	In 1X PBS, pH 7.4, with 0.09% sodium azide	0.08 ml

[Bulk quote request](#)

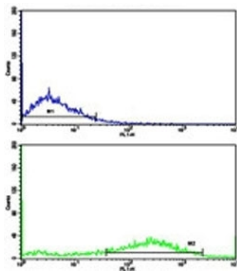
Availability	1-3 business days
Species Reactivity	Human
Format	Purified
Host	Rabbit
Clonality	Polyclonal (rabbit origin)
Isotype	Rabbit Ig
Purity	Purified
UniProt	Q16658
Applications	Western Blot : 1:1000 IHC (Paraffin) : 1:50-1:100 Flow Cytometry : 1:10-1:50
Limitations	This Fascin antibody is available for research use only.



Western blot analysis of Fascin antibody and Y79 lysate. Predicted molecular weight: 55 kDa.



IHC analysis of FFPE human lung carcinoma with Fascin antibody



Flow cytometric analysis of NCI-H292 cells using Fascin antibody (green) compared to a [negative control](#) (blue). FITC-conjugated goat-anti-rabbit secondary Ab was used for the analysis.

Description

Fascin organizes filamentous actin into bundles with a minimum of 4.1:1 actin/fascin ratio. It is probably involved in the assembly of actin filament bundles present in microspikes, membrane ruffles, and stress fibers.

Application Notes

Titration of the Fascin antibody may be required due to differences in protocols and secondary/substrate sensitivity.

Immunogen

A portion of amino acids 322-350 from the human protein was used as the immunogen for this Fascin antibody.

Storage

Aliquot the Fascin antibody and store frozen at -20oC or colder. Avoid repeated freeze-thaw cycles.