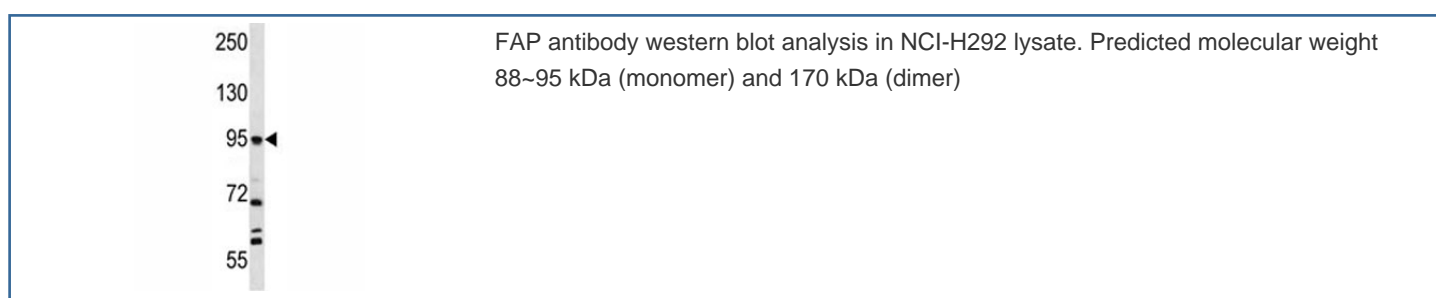


## FAP Antibody (F42270)

| Catalog No.   | Formulation                                | Size    |
|---------------|--|---------|
| F42270-0.4ML  | In 1X PBS, pH 7.4, with 0.09% sodium azide | 0.4 ml  |
| F42270-0.08ML | In 1X PBS, pH 7.4, with 0.09% sodium azide | 0.08 ml |

[Bulk quote request](#)

|                           |   |
|---------------------------|---|
| <b>Availability</b>       | 1-3 business days                                     |
| <b>Species Reactivity</b> | Human   |
| <b>Format</b>             | Purified  |
| <b>Clonality</b>          | Polyclonal (rabbit origin)                            |
| <b>Isotype</b>            | Rabbit Ig   |
| <b>Purity</b>             | Purified  |
| <b>UniProt</b>            | Q12884  |
| <b>Applications</b>       | Western Blot : 1:1000                                 |
| <b>Limitations</b>        | This FAP antibody is available for research use only. |



## Description

Fibroblast activation protein is a homodimeric integral membrane gelatinase belonging to the serine protease family. It is selectively expressed in reactive stromal fibroblasts of epithelial cancers, granulation tissue of healing wounds, and malignant cells of bone and soft tissue sarcomas. This protein is thought to be involved in the control of fibroblast growth or epithelial-mesenchymal interactions during development, tissue repair, and epithelial carcinogenesis.

## Application Notes

The stated application concentrations are suggested starting amounts. Titration of the FAP antibody may be required due to differences in protocols and secondary/substrate sensitivity.

## Immunogen

This FAP antibody was produced from rabbits immunized with the protein of human FAP.

## Storage

Store at 4°C for up to one month. For long term, aliquot the FAP antibody and store frozen at -20°C or colder. Avoid repeated freeze-thaw cycles.