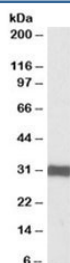


ETFA Antibody (R35493)

Catalog No.	Formulation	Size
R35493-100UG	0.5 mg/ml in 1X TBS, pH7.3, with 0.5% BSA (US sourced) and 0.02% sodium azide	100 ug

[Bulk quote request](#)

Availability	1-3 business days
Species Reactivity	Human, Mouse, Rat
Predicted Reactivity	Cow, Dog
Format	Antigen affinity purified
Clonality	Polyclonal (goat origin)
Isotype	Goat Ig
Purity	Antigen affinity
UniProt	P13804
Gene ID	2108
Applications	Western Blot : 0.05-0.2ug/ml ELISA (peptide) LOD : 1:8000
Limitations	This ETFA antibody is available for research use only.



Western blot testing of human heart lysate with ETFA antibody at 0.1ug/ml. Predicted molecular weight: ~35/30kDa (isoforms 1/2).

Description

Additional name(s) for this target protein: Electron-transfer-flavoprotein alpha

Application Notes

Optimal dilution of the ETFA antibody should be determined by the researcher.

Immunogen

Amino acids QVADYGIVADLFK were used as the immunogen for this ETFA antibody. This sequence is common to isoforms 1 and 2.

Storage

Aliquot and store the ETFA antibody at -20oC.