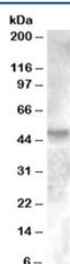


ESRRG Antibody (R33326)

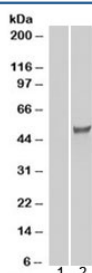
Catalog No.	Formulation	Size
R33326-100UG	0.5 mg/ml in 1X TBS, pH7.3, with 0.5% BSA (US sourced) and 0.02% sodium azide	100 ug

[Bulk quote request](#)

Availability	1-3 business days
Species Reactivity	Human
Predicted Reactivity	Mouse, Dog
Format	Antigen affinity purified
Clonality	Polyclonal (goat origin)
Isotype	Goat Ig
Purity	Antigen affinity
Gene ID	2104
Applications	Western Blot : 0.2-1ug/ml ELISA (peptide) LOD : 1:16000
Limitations	This ESRRG antibody is available for research use only.



Western blot testing of human breast lysate with ESRRG antibody at 0.2ug/ml. Predicted molecular weight: ~51 kDa.



Western blot of HEK293 lysate overexpressing ESRRG probed with ESRRG antibody (mock transfection in lane 1). Predicted molecular weight: ~51 kDa.

Description

Additional name(s) for this target protein: Estrogen-related receptor gamma

Application Notes

Optimal dilution of the ESRRG antibody should be determined by the researcher.

Immunogen

Amino acids CRMSNKDRHIDS were used as the immunogen for this ESRRG antibody.

Storage

Aliquot and store the ESRRG antibody at -20oC.