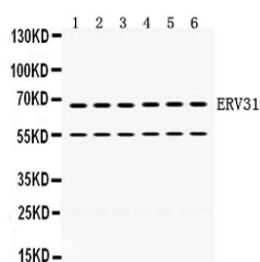


ERV3 Antibody / ERV3-1 (R32228)

Catalog No.	Formulation	Size
R32228	0.5mg/ml if reconstituted with 0.2ml sterile DI water	100 ug

[Bulk quote request](#)

Availability	1-3 business days
Species Reactivity	Human
Format	Antigen affinity purified
Host	Rabbit
Clonality	Polyclonal (rabbit origin)
Isotype	Rabbit IgG
Purity	Antigen affinity
Buffer	Lyophilized from 1X PBS with 2.5% BSA and 0.025% sodium azide
UniProt	Q14264
Applications	Western Blot : 0.5-1ug/ml
Limitations	This ERV3 antibody is available for research use only.



Western blot testing of human 1) HeLa, 2) 22RV1, 3) HepG2, 4) SKOV, 5) A431 and 6) HT1080 cell lysate with ERV3 antibody. Predicted molecular weight ~68 kDa.

Description

HERV-R_7q21.2 provirus ancestral Env polyprotein, also known as ERV3-1, is a protein that in humans is encoded by the ERV3 gene. By radiation hybrid analysis, the ERV3 gene is mapped to chromosome 7q11.2. The human genome includes many retroelements including the human endogenous retroviruses (HERVs). ERV3, one of the most studied HERVs, is thought to have integrated 30 to 40 million years ago and is present in higher primates with the exception of gorillas. Taken together, the observation of genome conservation, the detection of transcript expression, and the presence of conserved ORFs is circumstantial evidence for a functional role. A functional role is also suggested by the observation that downregulation of ERV3 is reported in choriocarcinoma.

Application Notes

Optimal dilution of the ERV3 antibody should be determined by the researcher.

Immunogen

Amino acids LELDDEGKVIKEITAKIQKLAHIPVQTWKG of human ERV3 were used as the immunogen for the ERV3 antibody.

Storage

After reconstitution, the ERV3 antibody can be stored for up to one month at 4oC. For long-term, aliquot and store at -20oC. Avoid repeated freezing and thawing.