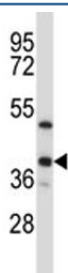


## ERCC1 Antibody (F43522)

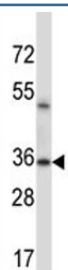
| Catalog No.   | Formulation                                | Size    |
|---------------|--------------------------------------------|---------|
| F43522-0.4ML  | In 1X PBS, pH 7.4, with 0.09% sodium azide | 0.4 ml  |
| F43522-0.08ML | In 1X PBS, pH 7.4, with 0.09% sodium azide | 0.08 ml |

[Bulk quote request](#)

|                           |                                                         |
|---------------------------|---------------------------------------------------------|
| <b>Availability</b>       | 1-3 business days                                       |
| <b>Species Reactivity</b> | Human, Mouse                                            |
| <b>Format</b>             | Antigen affinity purified                               |
| <b>Host</b>               | Rabbit                                                  |
| <b>Clonality</b>          | Polyclonal (rabbit origin)                              |
| <b>Isotype</b>            | Rabbit Ig                                               |
| <b>Purity</b>             | Antigen affinity                                        |
| <b>UniProt</b>            | P07992                                                  |
| <b>Applications</b>       | Western Blot : 1:1000                                   |
| <b>Limitations</b>        | This ERCC1 antibody is available for research use only. |



ERCC1 antibody western blot analysis in T47D lysate. Predicted molecular weight ~36kDa.



ERCC1 antibody western blot analysis in mouse lung tissue lysate

## Description

The product of this gene functions in the nucleotide excision repair pathway, and is required for the repair of DNA lesions such as those induced by UV light or formed by electrophilic compounds including cisplatin. The encoded protein forms a heterodimer with the XPF endonuclease (also known as ERCC4), and the heterodimeric endonuclease catalyzes the 5' incision in the process of excising the DNA lesion. The heterodimeric endonuclease is also involved in recombinational DNA repair and in the repair of inter-strand crosslinks. Mutations in this gene result in cerebrooculofacioskeletal syndrome, and polymorphisms that alter expression of this gene may play a role in carcinogenesis. Multiple transcript variants encoding different isoforms have been found for this gene. The last exon of this gene overlaps with the CD3e molecule, epsilon associated protein gene on the opposite strand.

## Application Notes

Titration of the ERCC1 antibody may be required due to differences in protocols and secondary/substrate sensitivity.

## Immunogen

A portion of amino acids 268-297 from the human protein was used as the immunogen for this ERCC1 antibody.

## Storage

Aliquot the ERCC1 antibody and store frozen at -20oC or colder. Avoid repeated freeze-thaw cycles.