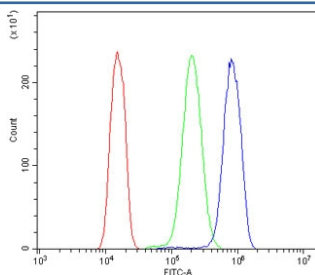


EPS15 Antibody (RQ5974)

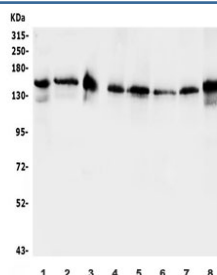
Catalog No.	Formulation	Size
RQ5974	0.5mg/ml if reconstituted with 0.2ml sterile DI water	100 ug

[Bulk quote request](#)

Availability	1-3 business days
Species Reactivity	Human, Mouse, Rat
Format	Antigen affinity purified
Host	Rabbit
Clonality	Polyclonal (rabbit origin)
Isotype	Rabbit IgG
Purity	Affinity purified
Buffer	Lyophilized from 1X PBS with 2% Trehalose and 0.025% sodium azide
UniProt	P42566
Applications	Western Blot : 0.5-1ug/ml Flow Cytometry : 1-3ug/million cells Direct ELISA : 0.1-0.5ug/ml
Limitations	This EPS15 antibody is available for research use only.



Flow cytometry testing of human A431 cells with EPS15 antibody at 1ug/million cells (blocked with goat sera); Red=cells alone, Green=isotype control, Blue= EPS15 antibody.



Western blot testing of 1) rat brain, 2) mouse brain, 3) mouse NIH 3T3 and human 4) HeLa, 5) Jurkat, 6) HEK293, 7) PC-3 and 8) ThP1 lysate with EPS15 antibody. Predicted molecular weight ~99 kDa, routinely observed at 120-150 kDa.

Description

Epidermal growth factor receptor substrate 15 is a protein that in humans is encoded by the EPS15 gene. It is mapped to 1p32.3. This gene encodes a protein that is part of the EGFR pathway. The protein is present at clatherin-coated pits and is involved in receptor-mediated endocytosis of EGF. Notably, this gene is rearranged with the HRX/ALL/MLL gene in acute myelogenous leukemias. Alternative splicing results in multiple transcript variants encoding distinct isoforms.

Application Notes

Optimal dilution of the EPS15 antibody should be determined by the researcher.

Immunogen

Recombinant human protein (amino acids M1-K295) was used as the immunogen for the EPS15 antibody.

Storage

After reconstitution, the EPS15 antibody can be stored for up to one month at 4°C. For long-term, aliquot and store at -20°C. Avoid repeated freezing and thawing.