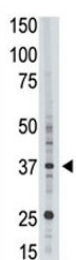


EPR1 Antibody (F40075)

Catalog No.	Formulation	Size
F40075-0.4ML	In 1X PBS, pH 7.4, with 0.09% sodium azide	0.4 ml
F40075-0.08ML	In 1X PBS, pH 7.4, with 0.09% sodium azide	0.08 ml

[Bulk quote request](#)

Availability	1-3 business days
Species Reactivity	Human
Format	Purified
Clonality	Polyclonal (rabbit origin)
Isotype	Rabbit Ig
Purity	Purified
UniProt	Q14868
Applications	Western Blot : 1:1000
Limitations	This EPR1 antibody is available for research use only.



EPR1 antibody used in western blot to detect EPR1 in HL-60 cell lysate

Description

Cellular receptors for blood proteases regulate chemotaxis, extracellular proteolysis, and growth behavior of normal and malignant cells. Effector cell protease receptor-1 (EPR1) is a receptor for the coagulation protease factor Xa. EPR1 is characterized by a cysteine-rich extracellular module, a single membrane-spanning domain, and a serine-rich cytoplasmic tail featuring at least 15 potential phosphorylation sites. EPR1 also contains 2 N-linked glycosylation sites, 4 O-linked glycosylation sites, and a chondroitin sulfate attachment site, which may provide anchoring for carbohydrate chains, EPR1 transfectants bind to factor Xa in a specific and saturable manner, and in the absence of factor V/Va promote prothrombin activation in a factor Xa concentration-dependent reaction. Activated platelets and megakaryocytes express EPR1. Both EPR1 and membrane-bound factor Va are thought to be required to mediate factor Xa binding to the

activated platelet to form a functional prothrombinase complex.

Application Notes

Titration of the EPR1 antibody may be required due to differences in protocols and secondary/substrate sensitivity.

Immunogen

A portion of amino acids 308-337 from the human protein was used as the immunogen for this EPR1 antibody.

Storage

Aliquot the EPR1 antibody and store frozen at -20oC or colder. Avoid repeated freeze-thaw cycles.