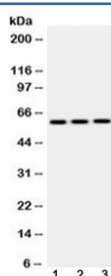


EPHX2 Antibody (R32613)

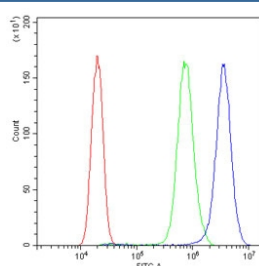
Catalog No.	Formulation	Size
R32613	0.5mg/ml if reconstituted with 0.2ml sterile DI water	100 ug

Bulk quote request

Availability	1-3 business days
Species Reactivity	Human, Mouse, Rat
Format	Antigen affinity purified
Host	Rabbit
Clonality	Polyclonal (rabbit origin)
Isotype	Rabbit IgG
Purity	Antigen affinity
Buffer	Lyophilized from 1X PBS with 2.5% BSA and 0.025% sodium azide
UniProt	P34913
Applications	Western Blot : 0.5-1ug/ml Flow Cytometry : 1-3ug/10 ⁶ cells
Limitations	This EPHX2 antibody is available for research use only.



Western blot testing of 1) rat lung, 2) mouse lung and 3) HepG2 lysate with EPHX2 antibody at 0.5ug/ml. Predicted molecular weight: ~63/57 kDa (isoforms 1/2).



Flow cytometry testing of human PC-3 cells with EPHX2 antibody at 1ug/10⁶ cells (blocked with goat sera); Red=cells alone, Green=isotype control, Blue= EPHX2 antibody.

Description

Soluble epoxide hydrolase (sEH), or Epoxide hydrolase 2, is a bifunctional enzyme that in humans is encoded by the EPHX2 gene. It is mapped to 8p21.2-p21.1. This gene encodes a member of the epoxide hydrolase family. The protein, found in both the cytosol and peroxisomes, binds to specific epoxides and converts them to the corresponding dihydrodiols. Mutations in this gene have been associated with familial hypercholesterolemia. Alternatively spliced transcript variants have been described.

Application Notes

Optimal dilution of the EPHX2 antibody should be determined by the researcher.

Immunogen

Amino acids 505-543 (QHMEDWIPHLKRGHIEDCGHWTQMDKPTEVNQILIKWLD-human) were used as the immunogen for the EPHX2 antibody.

Storage

After reconstitution, the EPHX2 antibody can be stored for up to one month at 4°C. For long-term, aliquot and store at -20°C. Avoid repeated freezing and thawing.