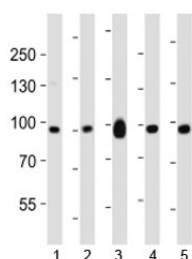


Ephb1 Antibody (F52891)

Catalog No.	Formulation	Size
F52891-0.4ML	In 1X PBS, pH 7.4, with 0.09% sodium azide	0.4 ml
F52891-0.08ML	In 1X PBS, pH 7.4, with 0.09% sodium azide	0.08 ml

[Bulk quote request](#)

Availability	1-3 business days
Species Reactivity	Mouse, Rat
Predicted Reactivity	Human
Format	Antigen affinity purified
Host	Rabbit
Clonality	Polyclonal (rabbit origin)
Isotype	Rabbit Ig
Purity	Antigen affinity
UniProt	Q8CBF3
Applications	Western Blot : 1:1000
Limitations	This Ephb1 antibody is available for research use only.



Western blot analysis of lysate from mouse 1) NIH3T3 cell line, 2) brain, 3) heart, 4) pancreas and 5) rat brain tissue lysate using Ephb1 antibody at 1:1000.

Description

Receptor tyrosine kinase which binds promiscuously transmembrane ephrin-B family ligands residing on adjacent cells, leading to contact-dependent bidirectional signaling into neighboring cells. The signaling pathway downstream of the receptor is referred to as forward signaling while the signaling pathway downstream of the ephrin ligand is referred to as reverse signaling. Cognate/functional ephrin ligands for this receptor include EFNB1, EFNB2 and EFNB3. During nervous system development, regulates retinal axon guidance redirecting ipsilaterally ventrotemporal retinal ganglion cells axons

at the optic chiasm midline. This probably requires repulsive interaction with EFNB2. In the adult nervous system together with EFNB3, regulates chemotaxis, proliferation and polarity of the hippocampus neural progenitors. Beside its role in axon guidance plays also an important redundant role with other ephrin-B receptors in development and maturation of dendritic spines and synapse formation. May also regulate angiogenesis. More generally, may play a role in targeted cell migration and adhesion. Upon activation by EFNB1 and probably other ephrin-B ligands activates the MAPK/ERK and the JNK signaling cascades to regulate cell migration and adhesion respectively.

Application Notes

Titration of the Ephb1 antibody may be required due to differences in protocols and secondary/substrate sensitivity.

Immunogen

This mouse Ephb1 antibody was produced from a rabbit immunized with a KLH conjugated synthetic peptide between 304-339 amino acids from the Central region of mouse Ephb1.

Storage

Aliquot the Ephb1 antibody and store frozen at -20oC or colder. Avoid repeated freeze-thaw cycles.