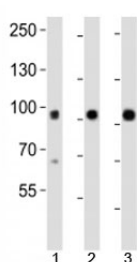


Epha1 Antibody (F52883)

Catalog No.	Formulation	Size
F52883-0.4ML	In 1X PBS, pH 7.4, with 0.09% sodium azide	0.4 ml
F52883-0.08ML	In 1X PBS, pH 7.4, with 0.09% sodium azide	0.08 ml

[Bulk quote request](#)

Availability	1-3 business days
Species Reactivity	Mouse
Format	Antigen affinity purified
Clonality	Polyclonal (rabbit origin)
Isotype	Rabbit Ig
Purity	Antigen affinity
UniProt	Q60750
Applications	Western Blot : 1:1000
Limitations	This Epha1 antibody is available for research use only.



Western blot analysis of lysate from mouse 1) kidney, 2) lung and 3) skin tissue using Epha1 antibody at 1:1000.

Description

Receptor tyrosine kinase which binds promiscuously membrane-bound ephrin-A family ligands residing on adjacent cells, leading to contact-dependent bidirectional signaling into neighboring cells. The signaling pathway downstream of the receptor is referred to as forward signaling while the signaling pathway downstream of the ephrin ligand is referred to as reverse signaling. Binds with a low affinity EFNA3 and EFNA4 and with a high affinity to EFNA1 which most probably constitutes its cognate/functional ligand. Upon activation by EFNA1 induces cell attachment to the extracellular matrix inhibiting cell spreading and motility through regulation of ILK and downstream RHOA and RAC. Plays also a role in angiogenesis and regulates cell proliferation. May play a role in apoptosis.

Application Notes

Titration of the Epha1 antibody may be required due to differences in protocols and secondary/substrate sensitivity.

Immunogen

This mouse Epha1 antibody was produced from a rabbit immunized with a KLH conjugated synthetic peptide between 70-105 amino acids from the N-terminal region of mouse Epha1.

Storage

Aliquot the Epha1 antibody and store frozen at -20oC or colder. Avoid repeated freeze-thaw cycles.