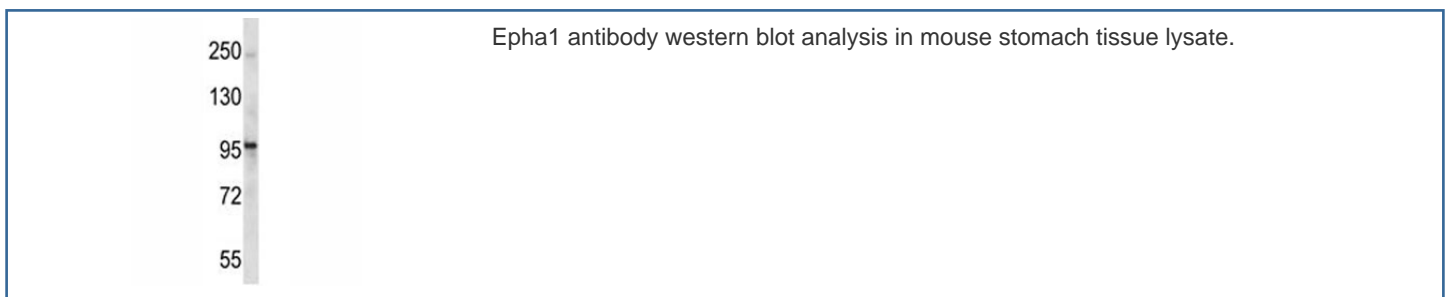


Epha1 Antibody (F44010)

Catalog No.	Formulation	Size
F44010-0.4ML	In 1X PBS, pH 7.4, with 0.09% sodium azide	0.4 ml
F44010-0.08ML	In 1X PBS, pH 7.4, with 0.09% sodium azide	0.08 ml

[Bulk quote request](#)

Availability	1-3 business days
Species Reactivity	Mouse
Format	Antigen affinity purified
Clonality	Polyclonal (rabbit origin)
Isotype	Rabbit Ig
Purity	Antigen affinity
UniProt	Q60750
Applications	Western Blot : 1:1000
Limitations	This Epha1 antibody is available for research use only.



Description

Receptor for members of the ephrin-A family. Binds with a low affinity to ephrin-A1.

Application Notes

Titration of the Epha1 antibody may be required due to differences in protocols and secondary/substrate sensitivity.

Immunogen

A portion of amino acids 339-366 from the mouse protein was used as the immunogen for this Epha1 antibody.

Storage

Aliquot the Epha1 antibody and store frozen at -20oC or colder. Avoid repeated freeze-thaw cycles.