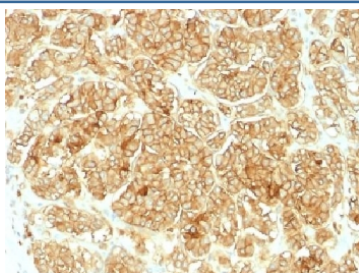


## EpCAM Antibody (V3312)

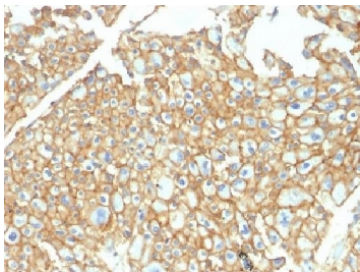
Catalog No.	Formulation	Size
V3312-100UG	0.2 mg/ml in 1X PBS with 0.1 mg/ml BSA (US sourced) and 0.05% sodium azide	100 ug
V3312-20UG	0.2 mg/ml in 1X PBS with 0.1 mg/ml BSA (US sourced) and 0.05% sodium azide	20 ug
V3312SAF-100UG	1 mg/ml in 1X PBS; BSA free, sodium azide free	100 ug

[Bulk quote request](#)

<b>Availability</b>	1-3 business days
<b>Species Reactivity</b>	Human, Rat
<b>Format</b>	Purified
<b>Host</b>	Rabbit
<b>Clonality</b>	Polyclonal (rabbit origin)
<b>Isotype</b>	Rabbit IgG
<b>Purity</b>	Protein G affinity chromatography
<b>UniProt</b>	P16422
<b>Localization</b>	Cell surface, cytoplasmic
<b>Applications</b>	Immunohistochemistry (FFPE) : 1-2ug/ml for 30 min at RT
<b>Limitations</b>	This EpCAM antibody is available for research use only.



IHC testing of FFPE human renal cell carcinoma and EpCAM antibody. Required HIER: steam sections in pH6 citrate buffer for 10-20 min.



IHC testing of FFPE human renal cell carcinoma and EpCAM antibody. Required HIER: steam sections in pH6 citrate buffer for 10-20 min.

## Description

EGP40 is a 40-43kDa transmembrane epithelial glycoprotein, also identified as epithelial specific antigen (ESA), or epithelial cellular adhesion molecule (Ep-CAM). It is expressed on baso-lateral cell surface in most simple epithelia and a vast majority of carcinomas. This antibody has been used to distinguish adenocarcinoma from pleural mesothelioma and hepatocellular carcinoma. This antibody is also useful in distinguishing serous carcinomas of the ovary from mesothelioma.

## Application Notes

Titering of the EpCAM antibody may be required for optimal performance.

## Immunogen

A human recombinant protein was used as the immunogen for the EpCAM antibody.

## Storage

Store the EpCAM antibody at 2-8oC (with azide) or aliquot and store at -20oC or colder (without azide).