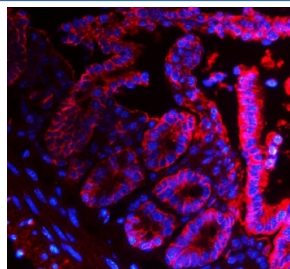


## Epcam Antibody (RQ6173)

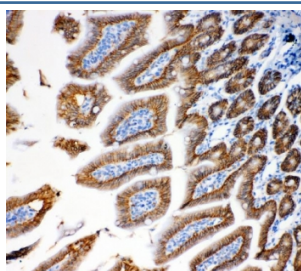
Catalog No.	Formulation	Size
RQ6173	0.5mg/ml if reconstituted with 0.2ml sterile DI water	100 ug

**Bulk quote request**

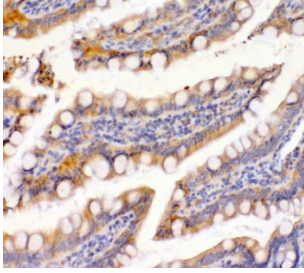
<b>Availability</b>	1-3 business days
<b>Species Reactivity</b>	Mouse, Rat
<b>Format</b>	Antigen affinity purified
<b>Host</b>	Rabbit
<b>Clonality</b>	Polyclonal (rabbit origin)
<b>Isotype</b>	Rabbit IgG
<b>Purity</b>	Affinity purified
<b>Buffer</b>	Lyophilized from 1X PBS with 2% Trehalose and 0.0125% sodium azide
<b>UniProt</b>	Q99JW5
<b>Applications</b>	Immunohistochemistry (FFPE) : 2-5ug/ml Immunofluorescence : 5ug/ml Direct ELISA : 0.1-0.5ug/ml
<b>Limitations</b>	This Epcam antibody is available for research use only.



Immunofluorescent staining of FFPE mouse intestine with Epcam antibody (red) and DAPI nuclear stain (blue). HIER: steam section in pH8 EDTA for 20 min.



IHC staining of FFPE mouse intestine with Epcam antibody. HIER: boil tissue sections in pH8 EDTA for 20 min and allow to cool before testing.



IHC staining of FFPE rat intestine with Epcam antibody. HIER: boil tissue sections in pH8 EDTA for 20 min and allow to cool before testing.

## Description

Epithelial cell adhesion molecule (EpCAM) is a transmembrane glycoprotein mediating  $\text{Ca}^{2+}$ -independent homotypic cell-cell adhesion in epithelia. This gene encodes a carcinoma-associated antigen and is a member of a family that includes at least two type I membrane proteins. This antigen is expressed on most normal epithelial cells and gastrointestinal carcinomas and functions as a homotypic calcium-independent cell adhesion molecule. The antigen is being used as a target for immunotherapy treatment of human carcinomas. Mutations in this gene result in congenital tufting enteropathy.

## Application Notes

Optimal dilution of the Epcam antibody should be determined by the researcher.

## Immunogen

A mouse recombinant partial protein (amino acids E147-N189) was used as the immunogen for the Epcam antibody.

## Storage

After reconstitution, the Epcam antibody can be stored for up to one month at 4°C. For long-term, aliquot and store at -20°C. Avoid repeated freezing and thawing.