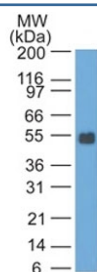


## EpCAM Antibody [clone GZ-20] (V8332)

Catalog No.	Formulation	Size
V8332-0.5ML	Bioreactor concentrate with 0.05% sodium azide	0.5 ml
V8332-0.1ML	Bioreactor concentrate with 0.05% sodium azide	0.1 ml

[Bulk quote request](#)

<b>Availability</b>	1-3 business days
<b>Species Reactivity</b>	Rat
<b>Format</b>	Bioreactor concentrate
<b>Host</b>	Mouse
<b>Clonality</b>	Monoclonal (mouse origin)
<b>Isotype</b>	Mouse IgG1, kappa
<b>Clone Name</b>	GZ-20
<b>Purity</b>	Culture supernatant
<b>Localization</b>	Cell surface, cytoplasmic
<b>Applications</b>	Western Blot : 1:100-1:200
<b>Limitations</b>	This EpCAM antibody is available for research use only.



Western blot testing of rat colon lysate with EpCAM antibody. Expected molecular weight: ~35 kDa (unmodified), 40-43 kDa (glycosylated).

## Description

EGP40 is a 40-43kDa transmembrane epithelial glycoprotein, also identified as epithelial specific antigen (ESA), or epithelial cellular adhesion molecule (Ep-CAM). It is expressed on basolateral cell surface in most simple epithelia and a vast majority of carcinomas.

## Application Notes

Optimal dilution of the EpCAM antibody should be determined by the researcher.

## **Immunogen**

Rat small intestine cells were used as the immunogen for the EpCAM antibody. The epitopes of the GZ-1 and GZ-20 monoclonal antibodies are known to be different.

## **Storage**

Store the EpCAM antibody at 2-8oC (with azide) or aliquot and store at -20oC or colder (without azide).