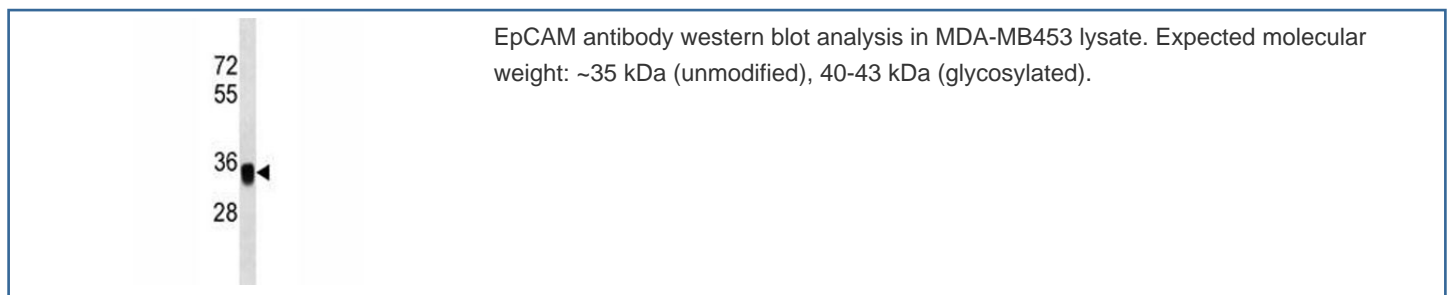


EpCAM Antibody (F46203)

Catalog No.	Formulation	Size
F46203-0.4ML	In 1X PBS, pH 7.4, with 0.09% sodium azide	0.4 ml
F46203-0.08ML	In 1X PBS, pH 7.4, with 0.09% sodium azide	0.08 ml

[Bulk quote request](#)

Availability	1-3 business days
Species Reactivity	Human
Format	Antigen affinity purified
Host	Rabbit
Clonality	Polyclonal (rabbit origin)
Isotype	Rabbit Ig
Purity	Antigen affinity
UniProt	P16422
Applications	Western Blot : 1:1000
Limitations	This EpCAM antibody is available for research use only.



Description

This gene encodes a carcinoma-associated antigen and is a member of a family that includes at least two type I membrane proteins. This antigen is expressed on most normal epithelial cells and gastrointestinal carcinomas and functions as a homotypic calcium-independent cell adhesion molecule. The antigen is being used as a target for immunotherapy treatment of human carcinomas. Mutations in this gene result in congenital tufting enteropathy.

Explore our [EpCAM Antibody / Epithelial Cell Marker Antibody](#) page for additional validation data and applications involving epithelial cell identification, tissue organization, and epithelial-derived tumor research.

Application Notes

Titration of the EpCAM antibody may be required due to differences in protocols and secondary/substrate sensitivity.

Immunogen

A portion of amino acids 200-229 from the human protein was used as the immunogen for this EpCAM antibody.

Storage

Aliquot the EpCAM antibody and store frozen at -20oC or colder. Avoid repeated freeze-thaw cycles.