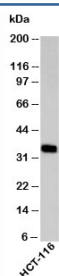


## EpCAM Antibody [clone EPM4072] (N1139)

Catalog No.	Formulation	Size
N1139-100UG	0.5 mg/ml in 1X PBS with 0.1 mg/ml BSA (US sourced), 0.05% sodium azide	100 ug
N1139-25UG	0.5 mg/ml in 1X PBS with 0.1 mg/ml BSA (US sourced), 0.05% sodium azide	25 ug

[Bulk quote request](#)

<b>Species Reactivity</b>	Human
<b>Format</b>	Purified
<b>Clonality</b>	Monoclonal (mouse origin)
<b>Isotype</b>	Mouse IgG1, kappa
<b>Clone Name</b>	EPM4072
<b>Purity</b>	Protein G affinity chromatography
<b>Buffer</b>	1X PBS, pH 7.4
<b>Gene ID</b>	4072
<b>Applications</b>	Western Blot : 2-4ug/ml
<b>Limitations</b>	This <b>EpCAM antibody</b> is available for research use only.



Western blot testing of human samples with EpCAM antibody at 2ug/ml. Expected molecular weight: ~35 kDa (unmodified), 40-43 kDa (glycosylated).

## Description

Epithelial cellular adhesion molecule (EpCAM), also called 'epithelial specific antigen,' or ESA, and 'epithelial glycoprotein EGP40.' It is expressed exclusively on cells of epithelial origin, making it a useful epithelial cell marker and a surface marker for human and mouse embryonic stem cells. In epithelial tissues, active proliferation corresponds to increased EpCAM levels, whereas differentiation is associated with low levels of the protein.

## Immunogen

A recombinant protein fragment from the C-terminal region of human EpCAM was used as the immunogen for this

antibody.

## **Storage**

Aliquot the EpCAM antibody and store frozen at -20oC or colder. Avoid repeated freeze-thaw cycles.