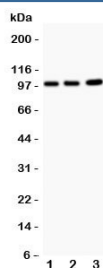


EPB41L1 Antibody (R31593)

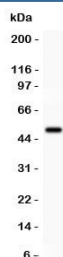
Catalog No.	Formulation	Size
R31593	0.5mg/ml if reconstituted with 0.2ml sterile DI water	100 ug

Bulk quote request

Availability	1-3 business days
Species Reactivity	Human, Mouse, Rat
Format	Antigen affinity purified
Host	Rabbit
Clonality	Polyclonal (rabbit origin)
Isotype	Rabbit IgG
Purity	Antigen affinity
Buffer	Lyophilized from 1X PBS with 2.5% BSA and 0.025% sodium azide
Gene ID	2036
Applications	Western Blot : 0.5-1ug/ml
Limitations	This EPB41L1 antibody is available for research use only.



Western blot testing of EPB41L1 antibody and Lane 1: rat brain; 2: mouse brain; 3: human A549. Predicted/observed size ~99 kDa.



Western blot testing of EPB41L1 antibody and recombinant human protein (0.5ng)

Description

Band 4.1-like protein 1 is a protein that in humans is encoded by the EPB41L1 gene. This gene is mapped to 20q11.23. It is found that a heterozygous missense mutation in the gene causes nonsyndromic intellectual disability. This gene may function to confer stability and plasticity to neuronal membrane via multiple interactions, including the spectrin-actin-based cytoskeleton, integral membrane channels and membrane-associated guanylate kinases. Additionally, EPB41L1 is a multifunctional protein that mediates interactions between the erythrocyte cytoskeleton and the overlying plasma membrane.

Application Notes

The stated application concentrations are suggested starting amounts. Titration of the EPB41L1 antibody may be required due to differences in protocols and secondary/substrate sensitivity.

Immunogen

Human partial recombinant protein (AA 691-881) was used as the immunogen for this EPB41L1 antibody.

Storage

After reconstitution, the EPB41L1 antibody can be stored for up to one month at 4°C. For long-term, aliquot and store at -20°C. Avoid repeated freezing and thawing.