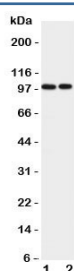


EPB41L1 Antibody (R31390)

| Catalog No. | Formulation | Size |
|-------------|---|--------|
| R31390 | 0.5mg/ml if reconstituted with 0.2ml sterile DI water | 100 ug |

Bulk quote request

| | |
|---------------------------|--|
| Availability | 1-3 business days |
| Species Reactivity | Human, Mouse, Rat |
| Format | Antigen affinity purified |
| Host | Rabbit |
| Clonality | Polyclonal (rabbit origin) |
| Isotype | Rabbit IgG |
| Purity | Antigen affinity |
| Buffer | Lyophilized from 1X PBS with 2.5% BSA and 0.025% sodium azide/thimerosal |
| UniProt | Q9H4G0 |
| Applications | Western Blot : 0.5-1ug/ml |
| Limitations | This EPB41L1 antibody is available for research use only. |



Western blot testing of EPB41L1 antibody and Lane 1: rat brain; 2: mouse brain lysate.
Predicted/observed size ~99KD

Description

Erythrocyte membrane protein band 4.1 like 1 is a protein that in humans is encoded by the EPB41L1 gene. It is found that a heterozygous missense mutation in the gene causes nonsyndromic intellectual disability. This gene may function to confer stability and plasticity to neuronal membrane via multiple interactions, including the spectrin-actin-based cytoskeleton, integral membrane channels and membrane-associated guanylate kinases. EPB41L1 has been shown to interact with ITPR1, Dopamine receptor D2, Dopamine receptor D3, CENTG1 and Nuclear mitotic apparatus protein 1.

Application Notes

The stated application concentrations are suggested starting amounts. Titration of the EPB41L1 antibody may be required due to differences in protocols and secondary/substrate sensitivity.

Immunogen

An amino acid sequence from the C-terminus of human Erythrocyte membrane protein band 4.1 like 1 (QDQERDTVFLKDNHLAIERK) was used as the immunogen for this EPB41L1 antibody.

Storage

After reconstitution, the EPB41L1 antibody can be stored for up to one month at 4°C. For long-term, aliquot and store at -20°C. Avoid repeated freezing and thawing.